

WAAS CH 48835 W31A	APP CRS 306°	Rwy Ldg TDZE Apt Elev	6143 4940 4970
----------------------------------------	------------------------	-----------------------------	-------------------------------------------

RNAV (GPS) RWY 31

JOHNSON COUNTY (BYG)

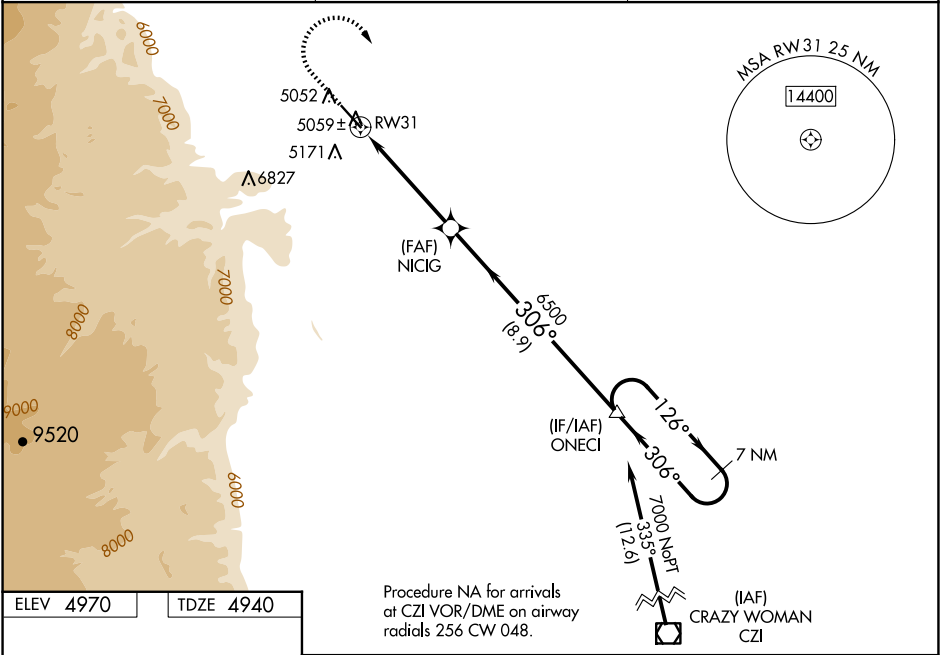
⚠

When Rwy 13 VGSi inop, Circling Rwy 13 NA at night. Baro-VNAV and VDP NA when using Sheridan altimeter setting. For uncompensated Baro-VNAV systems, LNAV/VNAV NA below -27°C (-16°F) or above 48°C (120°F). Circling NA southwest of Rwy 13-31. DME/DME RNP-0.3 NA. When local altimeter setting not received, use Sheridan altimeter setting and increase all DA/MDA 200 feet; increase all LPV, LNAV/VNAV, and all LNAV and Circling Cat C/D visibilities ¾ mile.

MISSED APPROACH:

Climb to 6000, then climbing right turn to 7000 direct ONECI and hold.

ASOS 135.425	SALT LAKE CENTER 127.75 351.9	UNICOM 122.8 (CTAF)
------------------------	-----------------------------------------	-------------------------------



ELEV 4970

TDZE 4940

REIL Rwy 31

MIRL Rwy 13-31

				VGSi and RNAV glidepath not coincident (VGSi Angle 3.00/TCH 42).
CATEGORY	A	B	C	D
LPV DA	5190-3/4 250 (300-3/4)			
LNAV/VNAV DA	5275-1 335 (400-1 1/2)			
LNAV MDA	5320-1 380 (400-1)		5320-1 380 (400-1 1/2)	
CIRCLING	5440-1 470 (500-1)		5460-1 1/2 490 (500-1 1/2) 5600-2 630 (700-2)	

NW-1, 10 JUL 2025 to 07 AUG 2025

NW-1, 10 JUL 2025 to 07 AUG 2025