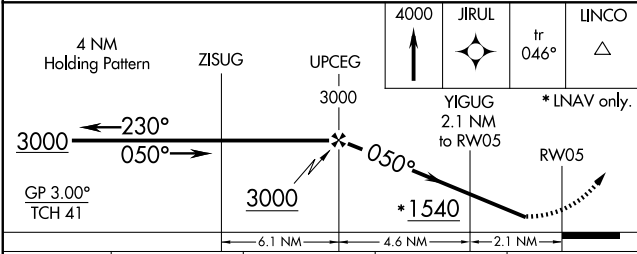
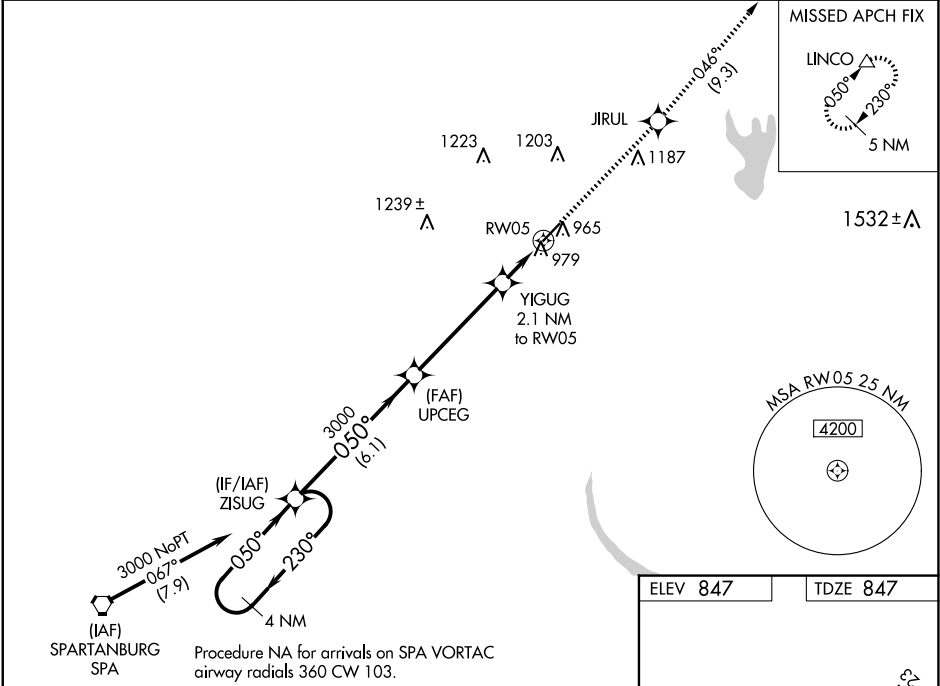


WAAS CH 63124 W05A	APP CRS 050°	Rwy Idg TDZE 847 Apt Elev 847
--	------------------------	---

RNAV (GPS) RWY 5

SHELBY-CLEVELAND COUNTY RGNL (EHO)

RNP APCH. <div><div>▼</div><div>▲</div></div> Baro-VNAV NA when using Charlotte altimeter setting. For uncompensated Baro-VNAV systems, LNAV/VNAV NA below -16°C or above 38°C. Rwy 5 helicopter visibility reduction below ¾ SM NA. When local altimeter setting not received, use Charlotte altimeter setting and increase all DA 88 feet and all MDA 100 feet; increase LPV all Cats visibility ½ SM and LNAV/VNAV all Cats, LNAV Cat C/D visibility ¼ SM.		MISSED APPROACH: Climb to 4000 direct JIRUL and on track 046° to LINCO and hold.
AWOS-3 118.425	CHARLOTTE APP CON 120.05 257.2	UNICOM 122.8 (CTAF) 0



CATEGORY	A	B	C	D
LPV DA	1097-1 250 (300-1)			
LNAV/VNAV DA	1173-1½ 326 (400-1½)			
LNAV MDA	1240-1 393 (400-1)		1240-1½ 393 (400-1½)	

