

WAAS  
CH **99424**  
**W23A**

APP CRS  
**230°**

Rwy Idg  
TDZE **847**  
Apt Elev **847**

**RNAV (GPS) RWY 23**

SHELBY-CLEVELAND COUNTY RGNL (EHO)

RNP APCH.

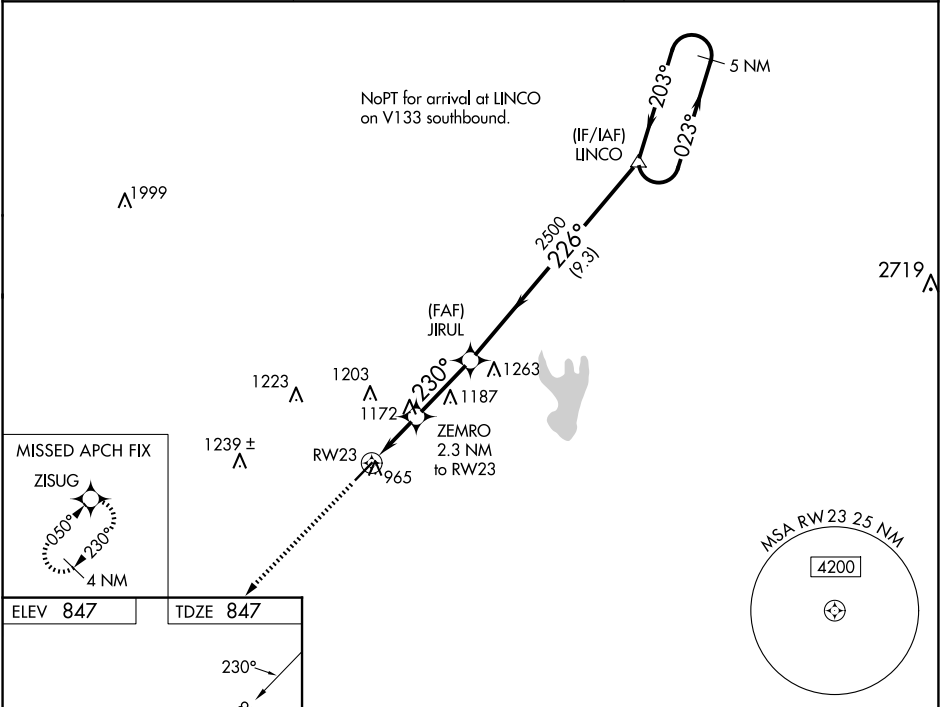
▼

▲

Baro-VNAV NA when using Charlotte altimeter setting. For uncompensated Baro-VNAV systems, LNAV/VNAV NA below -16°C or above 38°C. When local altimeter setting not received, use Charlotte altimeter setting and increase all DA 88 feet and all MDA 100 feet; increase LPV all Cats visibility ½ SM and LNAV/VNAV all Cats, LNAV Cat C/D visibility ¼ SM.

MISSED APPROACH:  
Climb to 3000 direct ZISUG and hold.

AWOS-3 <b>118.425</b>	CHARLOTTE APP CON <b>120.05 257.2</b>	UNICOM <b>122.8 (CTAF) 0</b>
--------------------------	--	---------------------------------



ELEV **847**

TDZE **847**

3000

ZISUG

VGSI and RNAV glidepath not coincident (VGSI Angle 3.00/TCH 28).

5 NM Holding Pattern

LINCO

023° → 4000

← 203°

GP 3.00° TCH 40

\* LNAV only.

ZEMRO 2500 2.3 NM to RW23

JIRUL 2500

RW23

230°

226°

2500

1600

2.3 NM

2.8 NM

9.3 NM

CATEGORY	A	B	C	D
LPV DA	1097-1 250 (300-1)			
LNAV/VNAV DA	1123-1 276 (300-1)			
LNAV MDA	1440-1	593 (600-1)	1440-1¾	593 (600-1¾)

MIRL Rwy 5-23 0