

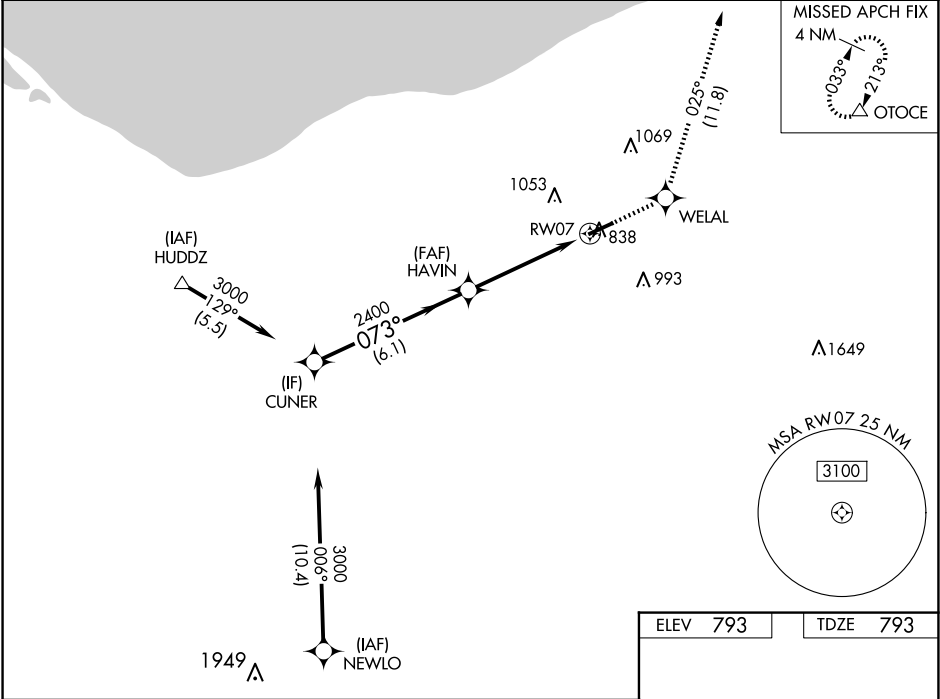
WAAS CH <b>99612</b> <b>W07A</b>	APP CRS <b>073°</b>	Rwy Idg TDZE <b>793</b> Apt Elev <b>793</b>	<b>5002</b>
--	------------------------	---	-------------

RNAV (GPS) RWY 7

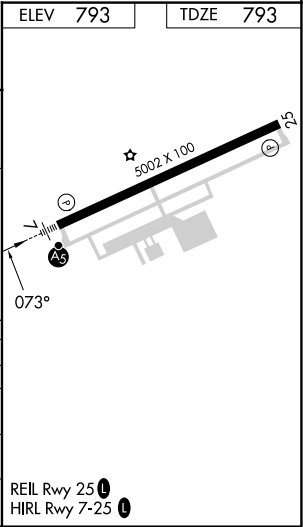
LORAIN COUNTY RGNL (LPR)

RNP APCH.	MALSR	MISSED APPROACH: Climb to 3000 direct WELAL and on track 025° to OTOCE and hold.
For uncompensated Baro-VNAV systems, LNAV/VNAV NA below -16°C (4°F) or above 54°C (130°F).		

ASOS <b>118.925</b>	CLEVELAND APP CON <b>125.35 346.325</b>	CLNC DEL <b>125.7</b>	UNICOM <b>122.7 (CTAF) 0</b>
------------------------	--	--------------------------	---------------------------------



CUNER		HAVIN		3000	WELAL	tr 025°	OTOCE
3000		2400		2400	*1.5 NM to RW07		
GP 3.00°		073°		*LNAV only			
TCH 54		6.1 NM		3.3 NM		1.5 NM	
CATEGORY	A	B	C	D			
LPV DA	993-1/2		200 (200-1/2)				
LNAV/VNAV DA	1133-3/4		340 (400-3/4)				
LNAV MDA	1340-1/2 547 (600-1/2)		1340-1 1/8 547 (600-1 1/8)				
CIRCLING	1340-1 547 (600-1)	1360-1 567 (600-1)	1420-1 3/4 627 (700-1 3/4)	1420-2 627 (700-2)			



EC-2, 10 JUL 2025 to 07 AUG 2025

EC-2, 10 JUL 2025 to 07 AUG 2025