

LOC I-LQG <b><u>111.7</u></b>	APP CRS <b>073°</b>	Rwy Idg TDZE Apt Elev	<b>5002</b> <b>793</b> <b>793</b>
----------------------------------	------------------------	-----------------------------	-----------------------------------------

ILS or LOC RWY 7  
LORAIN COUNTY RGNL (LPR)

**T** For inoperative MALS, increase S-LOC 7 Cats C/D visibility to 1 $\frac{3}{8}$  mile.  
**A** VDP NA with Cleveland-Hopkins Intl altimeter setting. When local altimeter setting not received, use Cleveland-Hopkins Intl altimeter setting and increase all DA 36 feet and all MDA 40 feet.

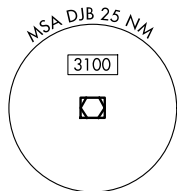
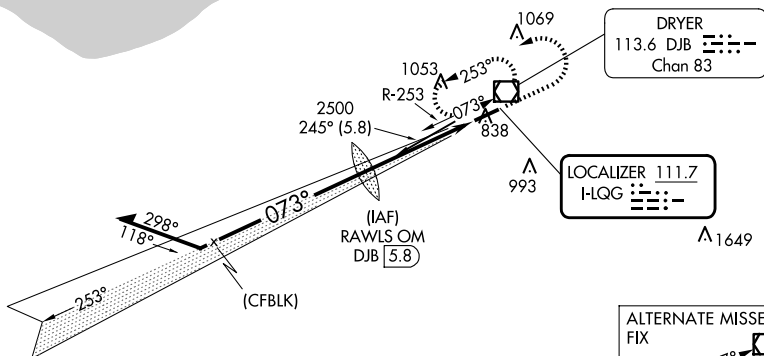
MALSR

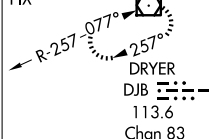
**MISSED APPROACH:** Climb to 1400 then climbing left turn to 3000 on heading 270° then left turn direct DJB VOR/DME and hold.

ASOS <b>118.925</b>	CLEVELAND APP CON <b>125.35 346.325</b>	CLNC DEL <b>125.7</b>	UNICOM <b>122.7 (CTAF) ①</b>
------------------------	--------------------------------------------	--------------------------	---------------------------------

## DME REQUIRED



ALTERNATE MISSED APCH  
FIX



ELEV 793	TDZE 793	
----------	----------	--

FAF to MAP 4.4 NM

Knots	60	90	120	150	180
Min:Sec	4:24	2:56	2:12	1:46	1:28

Diagram illustrating a Circling Approach with a Step-Down Fix. The approach path is shown with a 3D perspective. The initial descent is at 2500 feet, heading 253°. At the step-down fix, the heading changes to 073°, and the altitude remains at 2500 feet. The final descent is at 2263 feet, heading 270°. The diagram includes a table of approach parameters and a table of altitudes for different categories.

CATEGORY	A	B	C	D
S-ILS 07	993-1/2 200 (200-1/2)			
S-LOC 07	1280-1/2 487 (500-1/2)		1280-1 487 (500-1)	
<b>C</b> CIRCLING	1280-1 487 (500-1)	1360-1 567 (600-1)	1420-1 3/4 627 (700-1 3/4)	1420-2 627 (700-2)

ILS or LOC RWY 7