

APP CRS	Rwy Idg	<b>3829</b>
<b>214°</b>	TDZE	<b>235</b>
	Apt Elev	<b>235</b>

RNAV (GPS) RWY 21  
WARREN MUNI/JOHN B FRAZER JR FLD (3M9)

RNP APCH - GPS.

<b>T</b>	Use Monticello altimeter setting.
<b>A</b> NA	Procedure NA at night.

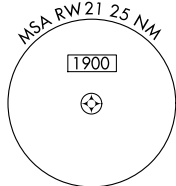
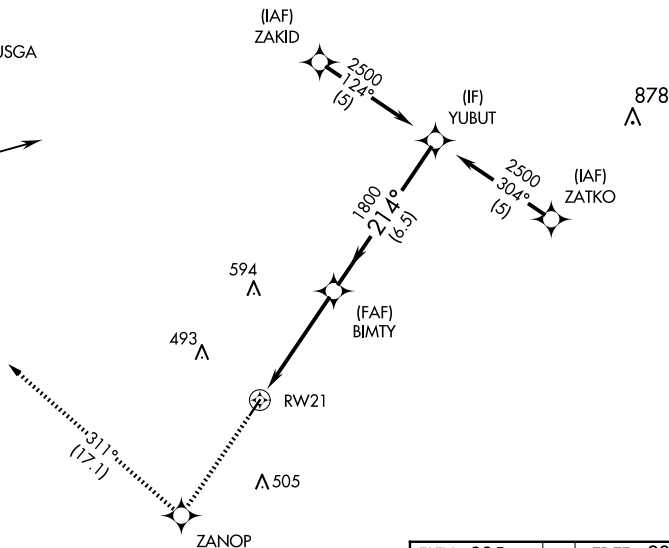
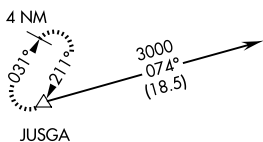
**MISSED APPROACH:** Climb to 3000 direct ZANOP and on track 311° to JUSGA and hold.

LLQ ASOS  
**133,325**

MEMPHIS CENTER  
135,875 269.35

CTAF  
122.9 **L**

Procedure NA for arrivals at JUSGA  
on V69 southwest bound.



3000    ZANOP    tr 311°    JUSGA    VGSJ and descent angles not coincident (VGSJ Angle 3.50/TCH 40).    YUBUT

RW21    BIMTY    2500

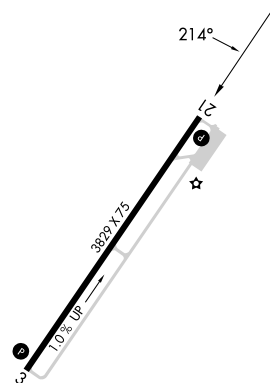

1800    214°

≤ 3.04°  
TCH 45

47 NM    6.5 NM

CATEGORY	A	B	C	D
LNAV MDA	720-1	485 (500-1)	720-1 <sup>3</sup> / <sub>8</sub> 485 (500-1 <sup>3</sup> / <sub>8</sub> )	NA

ELEV 235		TDZE 235
----------	--	----------

LIRL Rwy 3-21 

RNAV (GPS) RWY 21