

STARKVILLE, MISSISSIPPI

AL-5699 (FAA)

22363

WAAS CH 50419 W18A	APP CRS 180°	Rwy Idg 4171 TDZE 333 Apt Elev 333
--	------------------------	---

RNAV (GPS) RWY 18

GEORGE M BRYAN (STF)

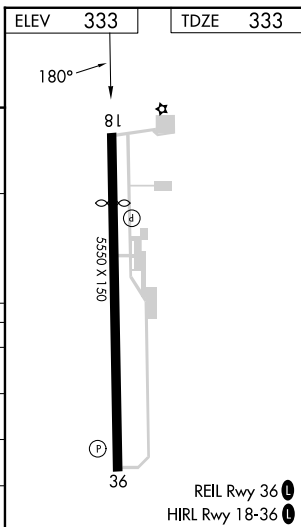
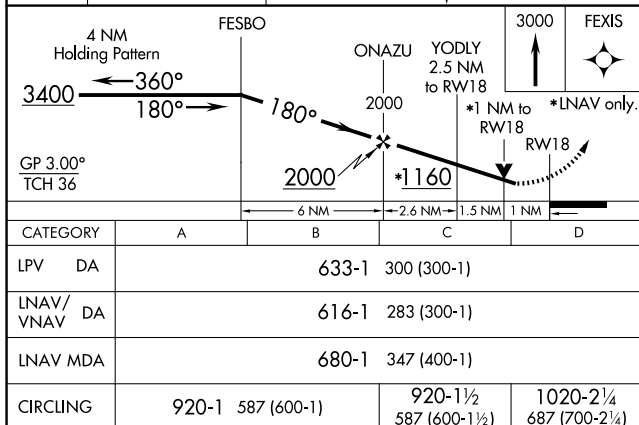
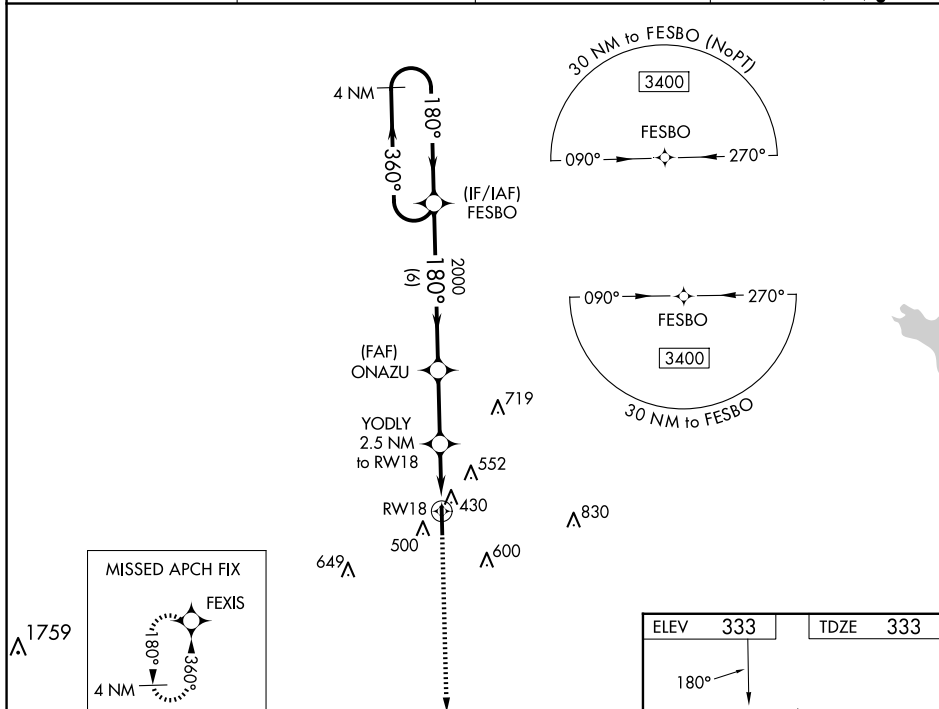
RNP APCH-GPS.

**T
A**

For uncompensated Baro-VNAV systems, LNAV/VNAV NA below -15°C or above 54°C. Baro-VNAV and VDP NA when using Golden Triangle Rgnl altimeter setting. Rwy 18 helicopter visibility reduction below ¾ SM NA. When local altimeter setting not received, use Golden Triangle Rgnl altimeter setting and increase LPV DA to 673 feet, increase LNAV/VNAV DA to 656 feet and visibilities all Cats ¼ SM. Increase all MDA 40 feet and LNAV visibility Cat C/D ¼ SM, and Circling visibility Cat C ¼ SM.

MISSED APPROACH:
Climb to 3000 direct
FEXIS and hold.

AWOS-3PT 118.975	COLUMBUS APP CON ★ 135.6 323.275	CLNC DEL 126.25	UNICOM 122.7 (CTAF) 0
----------------------------	--	---------------------------	---------------------------------



STARKVILLE, MISSISSIPPI

Amdt 2C 06OCT22

33°26'N-88°51'W

GEORGE M BRYAN (STF)

RNAV (GPS) RWY 18

SC-4, 10 JUL 2025 to 07 AUG 2025