

LOC/DME I-STF <b>109.9</b> Chan <b>36</b>	APP CRS <b>360°</b>	Rwy Idg <b>5550</b> TDZE <b>326</b> Apt Elev <b>333</b>
---	------------------------	---

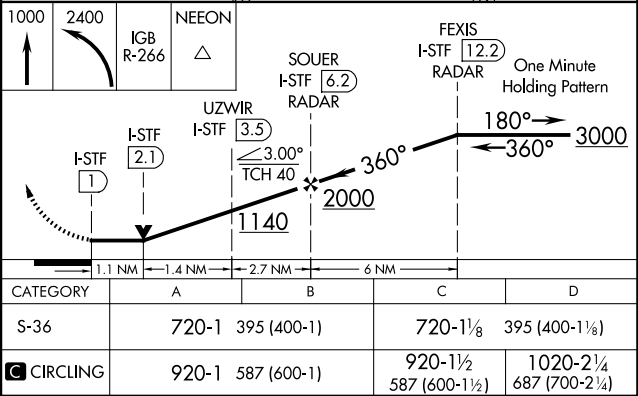
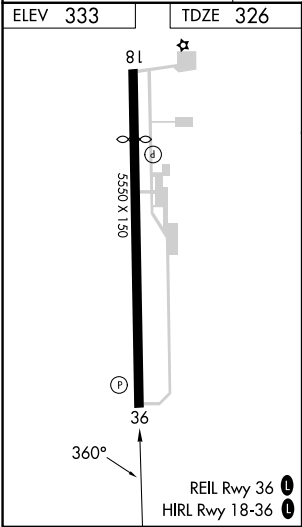
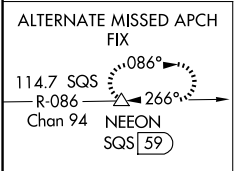
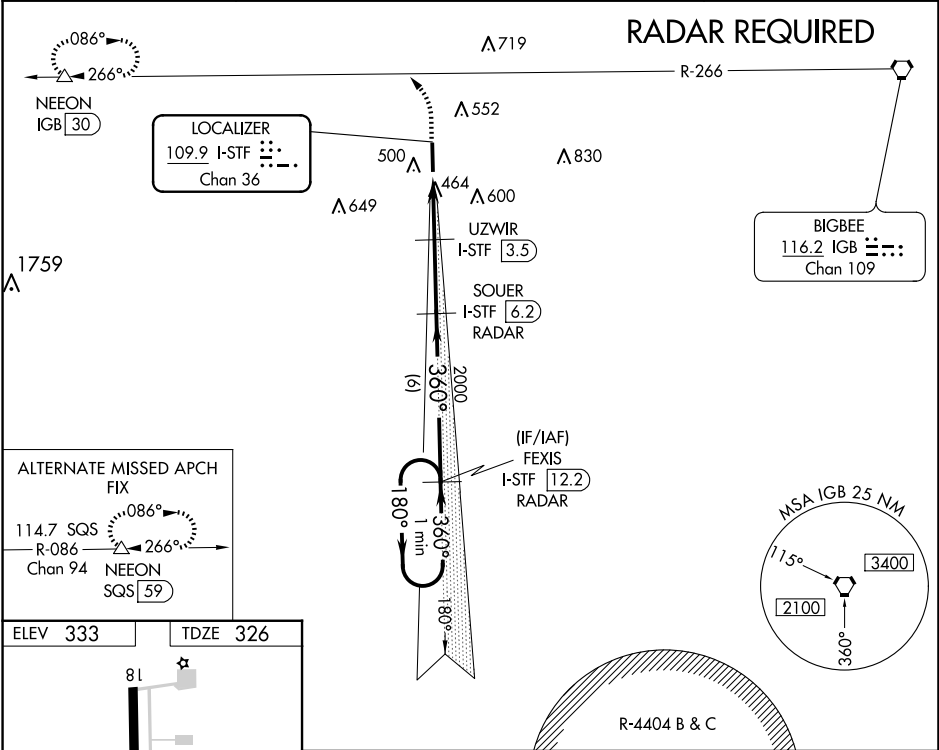
LOC/DME RWY 36  
GEORGE M BRYAN (STF)

**NA**

DME Required. When local altimeter setting not received, use Golden Triangle altimeter setting and increase all MDA 40 feet; increase S-36 Cats C/D visibility 1/8 mile and Circling Cat C visibility 1/4 mile. VDP NA when using Golden Triangle altimeter setting.

MISSED APPROACH: Climb to 1000, then climbing left turn to 2400 on IGB VORTAC R-266 to NEEON/IGB 30 DME and hold.

AWOS-3PT <b>118.975</b>	COLUMBUS APP CON ★ <b>135.6 323.275</b>	CLNC DEL <b>126.25</b>	UNICOM <b>122.7 (CTAF) 0</b>
----------------------------	--	---------------------------	---------------------------------



SC-4, 10 JUL 2025 to 07 AUG 2025

SC-4, 10 JUL 2025 to 07 AUG 2025