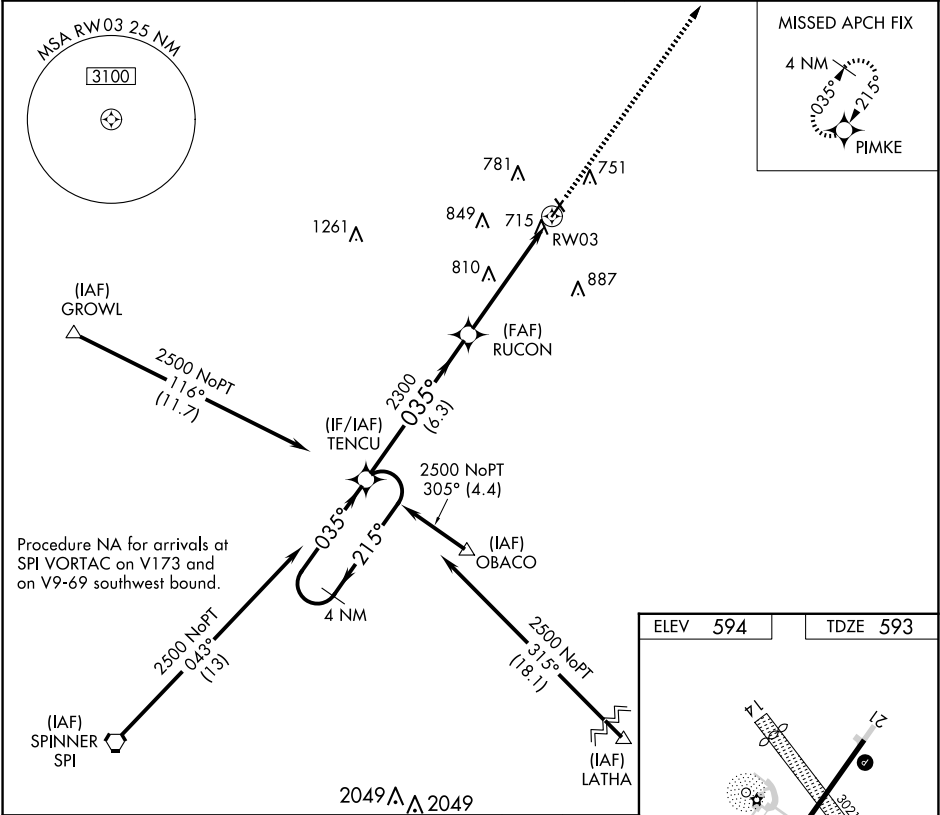


APP CRS	Rwy Ldg	4000
035°	TDZE	593
	Apf Elev	594

RNAV (GPS) RWY 3  
LOGAN COUNTY (AAA)

RNP APCH. If local altimeter setting not received, use Springfield, IL altimeter setting and increase all MDAs 60 feet. VDP NA with Springfield, IL altimeter setting. Rwy 3 helicopter visibility reduction below ¾ SM NA.	MISSED APPROACH: Climb to 2700 direct PIMKE and hold.
--------------------------------------------------------------------------------------------------------------------------------------------------------------------------------------------------------------------------------	-------------------------------------------------------

AWOS-3 118.775	SAINT LOUIS APP CON ★ 126.15 323.0	UNICOM 122.8 (CTAF) 0
-------------------	---------------------------------------	--------------------------



4 NM Holding Pattern					VGSI and descent angles not coincident (VGSI Angle 3.50/TCH 26).					2700	PIMKE
TENCU					RUCON					1.5 NM to RW03	
2500					2300					RW03	
←215°					035°→					3.05°	
035°					035°					TCH 36	
6.3 NM					3.7 NM					1.5 NM	
CATEGORY	A		B		C		D				
LNAV MDA	1120-1		527 (600-1)		1120-1½ 527 (600-1½)		1120-1¾ 527 (600-1¾)				

