

WAAS CH 42911 W06A	APP CRS 060°	Rwy Idg TDZE Apt Elev	6406 616 616
--	------------------------	-----------------------------	---

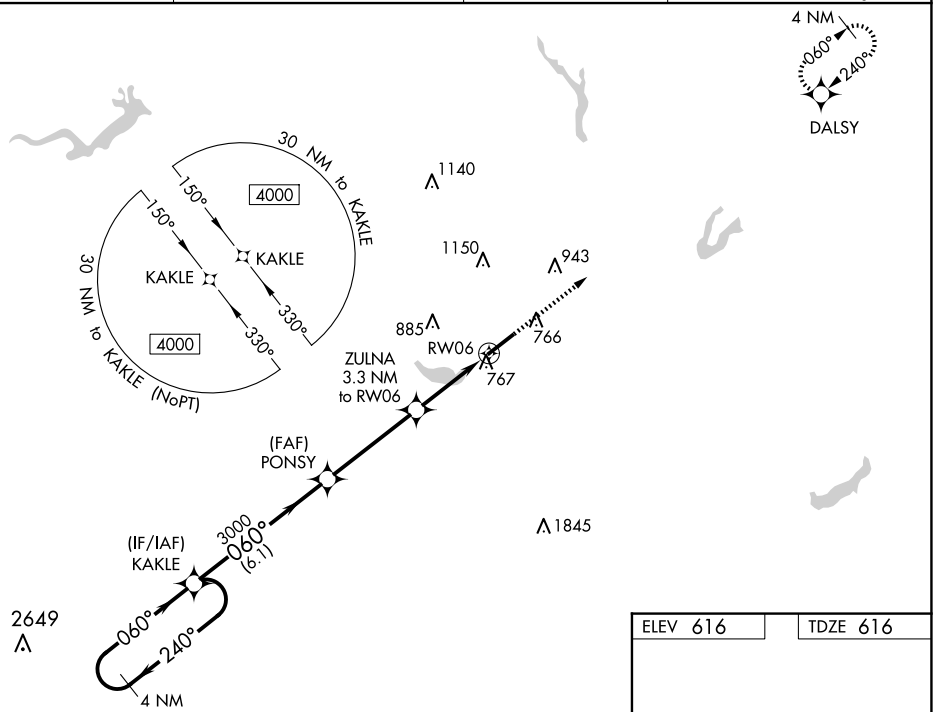
RNAV (GPS) RWY 6

BURLINGTON/ALAMANCE RGNL (BUY)

- T** For uncompensated Baro-VNAV systems, LNAV/VNAV NA below -12°C (11°F) or above 54°C (130°F). DME/DME RNP-0.3 NA. When local altimeter setting not received, use Greensboro altimeter setting and increase all DA 97 feet and all MDA 100 feet, increase LPV and LNAV/VNAV visibility $\frac{3}{8}$ mile, LNAV Cats C/D and Circling Cat C $\frac{1}{4}$ mile. VDP and Baro-VNAV NA when using Greensboro altimeter setting. Helicopter visibility reduction below $\frac{3}{4}$ SM NA.

MISSED APPROACH:
Climb to 4000 direct
DALSY and hold.

ASOS 135.325	GREENSBORO APP CON 126.6 327.075	CLNC DEL 120.25	UNICOM 122.975(CTAF) 0
------------------------	--	---------------------------	----------------------------------



4 NM Holding Pattern

VGS and RNAV glidepath not coincident (VGS Angle 3.00/TCH 45).

4000 ← 240° KAKLE → 060°

PONSJ 3000

ZULNA 3.3 NM to RW06

GP 3.00° TCH 50

3000

1700

*1.1 NM to RW06

6.1 NM 4 NM 2.2 NM 1.1 NM

4000 DALSY

*LNAV only

CATEGORY		A	B	C	D
LPV	DA	866-3/4		250 (300-3/4)	
RNAV/ VNAV	DA	928-1		312 (400-1)	
RNAV	MDA	1020-1 404 (500-1)		1020-1 1/8 404 (500-1 1/8)	
C CIRCLING		1100-1 484 (500-1)		1520-2 3/4 904 (1000-2 3/4)	1520-3 904 (1000-3)

