

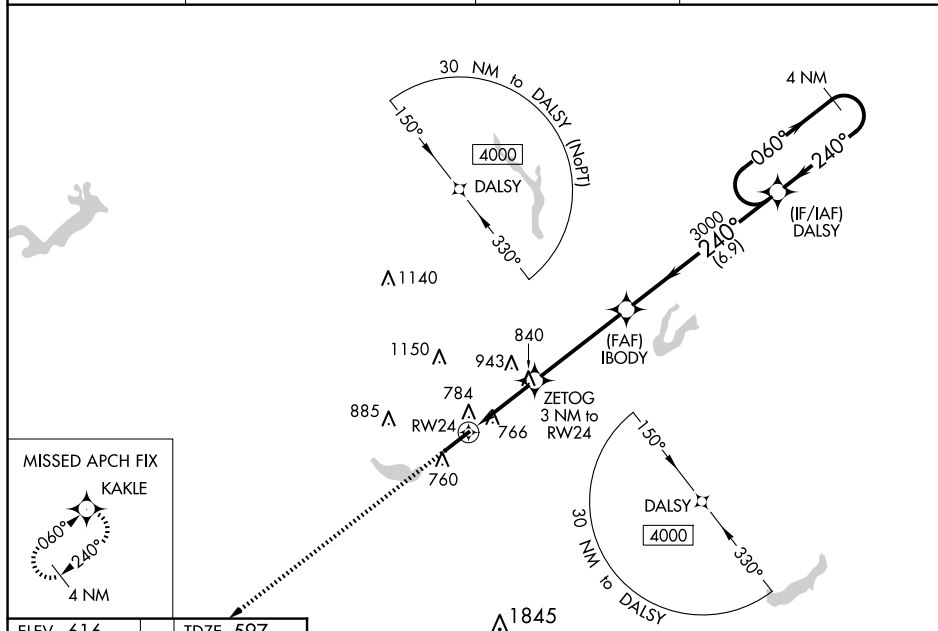
WAAS CH <b>48836</b> <b>W24A</b>	APP CRS <b>240°</b>	Rwy Idg <b>6406</b> TDZE <b>597</b> Apt Elev <b>616</b>
--	------------------------	---

RNAV (GPS) RWY 24  
BURLINGTON/ALAMANCE RGNL (BUY)

**T** For uncompensated Baro-VNAV systems, INAV/VNAV NA below -12°C (11°F) or above 54°C (130°F). DME/DME RNP-0.3 NA. When local altimeter setting not received, use Greensboro altimeter setting and increase all DA 97 feet and all MDA 100 feet. Increase LPV, INAV/VNAV, INAV Cats C/D and Circling Cat C visibility ¼ mile. Baro-VNAV and VDP NA when using Greensboro altimeter setting. Helicopter visibility reduction below ¾ SM NA.

**MISSED APPROACH:**  
Climb to 4000 direct  
KAKLE and hold.

ASOS <b>135.325</b>	GREENSBORO APP CON <b>126.6 327.075</b>	CLNC DEL <b>120.25</b>	UNICOM <b>122.975(CTAF) 0</b>
------------------------	--	---------------------------	----------------------------------



SE-2, 10 JUL 2025 to 07 AUG 2025

CATEGORY	A	B	C	D
LPV DA	987-1¼	390 (400-1¼)		
LNNAV/VNAV DA	1056-1½	459 (500-1½)		
LNNAV MDA	1060-1 463 (500-1)	1060-1¾ 463 (500-1¾)		
<b>C</b> CIRCLING	1100-1 484 (500-1)	1520-2¾ 904 (1000-2¾)	1520-3 904 (1000-3)	