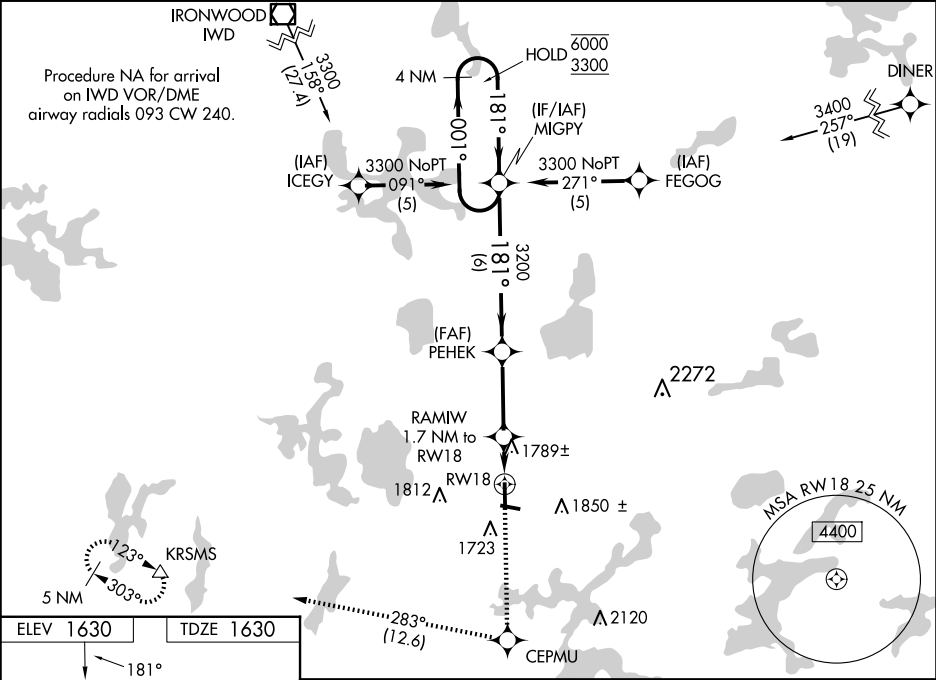


WAAS CH <b>72915</b> <b>W18A</b>	APP CRS <b>181°</b>	Rwy Idg TDZE Apt Elev	<b>5150</b> <b>1630</b> <b>1630</b>
----------------------------------------	------------------------	-----------------------------	-------------------------------------------

RNAV (GPS) RWY 18

LAKELAND/NOBLE F LEE MEML FLD (A.R.V)

RNP APCH.		MISSED APPROACH: Climb to 6000 direct CEPMU and right turn on track 283° to KRSMs and hold, continue climb-in-hold to 6000.
<div><div>⚠</div><div>⚠</div></div> <div>Circling Rwy 10, 28 NA at night. Rwy 18 helicopter visibility reduction below ¾ SM NA. For uncompensated Baro-VNAV systems, LNAV/VNAV NA below -18°C or above 54°C.</div>		
AWOS-3 <b>121.125</b>	MINNEAPOLIS CENTER <b>133.65 281.5</b>	UNICOM <b>122.7 (CTAF) 0</b>



ELEV 1630	TDZE 1630
<div>81 181°</div> <div>5150 X 100</div> <div>10 36 28</div> <div>3602 X 75</div> <div>MIRL Rwy 10-28</div> <div>HIRL Rwy 18-36</div> <div>REIL Rwy 18 and 28</div>	
<div>6000 CEPMU</div> <div>KRSMs</div> <div>tr 283°</div> <div>* LNAV only.</div> <div>RAMIW 1.7 NM to RW18</div> <div>*1.2 NM to RW18</div> <div>RW18</div> <div>PEHEK 3200</div> <div>MIGPY</div> <div>4 NM Holding Pattern</div> <div>001° 6000</div> <div>181° 3300</div> <div>GP 3.00° TCH 44</div>	
<div>1.2 NM 0.6 NM 3 NM 6 NM</div>	
CATEGORY	A B C D
LPV DA	1974-1¼ 344 (400-1¼)
LNAV/VNAV DA	2101-1¾ 471 (500-1¾)
LNAV MDA	2040-1 410 (500-1) 2040-1¼ 410 (500-1¼)
CIRCLING	2100-1 470 (500-1) 2200-1 570 (600-1) 2200-1½ 570 (600-1½) 2220-2 590 (600-2)