

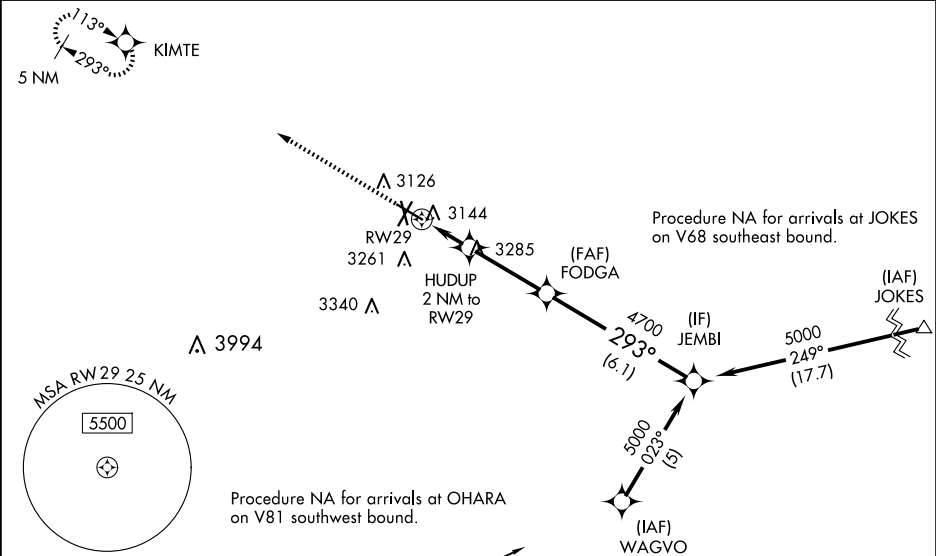
WAAS CH 86318 W29A	APP CRS 293°	Rwy Idg 6200 TDZE 2980 Apt Elev 3004
--	------------------------	---

RNAV (GPS) RWY 29

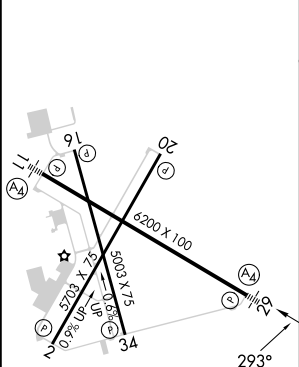
ODESSA-SCHLEMEYER FLD (ODO)

RNP APCH. <div><div>⚠</div><div>Baro-VNAV NA when using Midland Intl Air and Space Port altimeter setting. For uncompensated Baro-VNAV systems, LNAV/VNAV NA below -21°C or above 43°C. Circling NA south of Rwy 2 and 34. When local altimeter setting not received use Midland Intl Air and Space Port altimeter setting and increase all DAs 41 feet and all MDAs 60 feet and increase LNAV Cats C and D visibility ¼ SM, Circling Cat C visibility ¼ SM. VDP NA with Midland Intl Air and Space Port altimeter setting.</div></div>	MALS <div><div>Ⓐ</div><div>—</div></div>	MISSED APPROACH: Climb to 5000 direct KIMTE and hold.
--	---	--

ASOS 119.275	MIDLAND APP CON★ 124.6 256.875	CLNC DEL 121.7	UNICOM 123.0 (CTAF) 1
------------------------	--	--------------------------	--



ELEV 3004	TDZE 2980
------------------	------------------



OHARA 5000 057° (12)			
* LNAV only.			
HUDUP 2 NM to RWY 29			
* 1.2 NM to RWY 29			
RWY 29 3660*			
1.2 0.8 3.2 NM 6.1 NM			
CATEGORY	A	B	C
LPV DA	3180-3¼ 200 (200-¾)		
LNAV/VNAV DA	3414-1½ 434 (500-1½)		
LNAV MDA	3400-1	420 (500-1)	3400-1¼ 420 (500-1¼)
CIRCLING	3460-1	456 (500-1)	3600-1½ 596 (600-1½) 3600-2 596 (600-2)