

WAAS CH 40431 W18A	APP CRS 181°	Rwy Idg TDZE 1737 Apt Elev 1737	4306
--	------------------------	---	-------------

RNAV (GPS) RWY 18

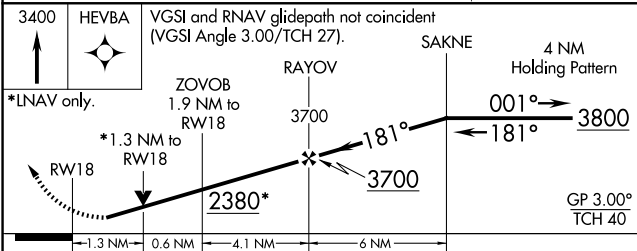
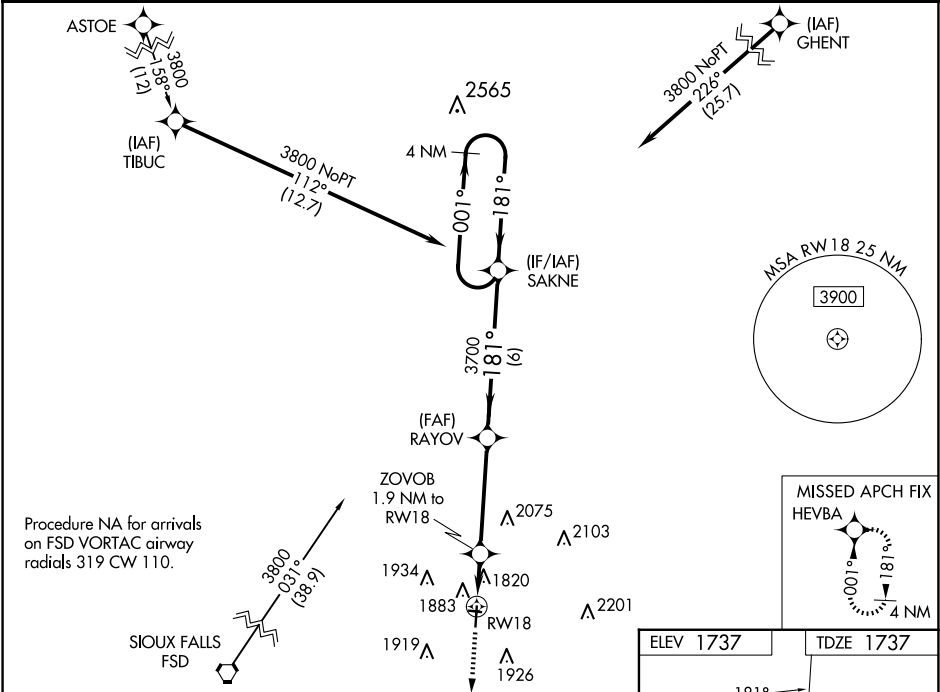
PIPESTONE MUNI (PQN)

⚠

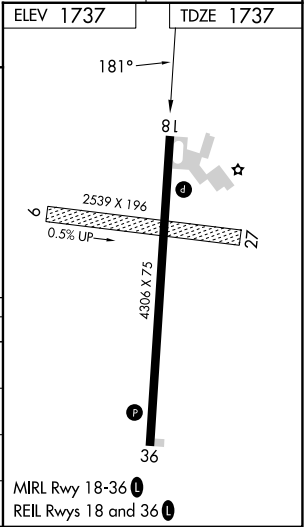
For uncompensated Baro-VNAV systems, LNAV/VNAV NA below -18°C (0°F) or above 54°C (130°F).
DME/DME RNP -0.3 NA. When local altimeter setting not received, use Slayton altimeter setting and increase all DA 68 feet and all MDA 80 feet; increase LPV all Cats, LNAV/VNAV all Cats, and Circling Cat C visibility ¼ mile; increase LNAV Cat C visibility ½ mile. Helicopter visibility reduction below ¾ SM NA. Baro-VNAV and VDP NA with Slayton altimeter setting. Circling NA to Rwy 9 and 27.

MISSED APPROACH:
Climb to 3400 direct HEVBA and hold.

AWOS-3PT 118.375	MINNEAPOLIS CENTER 132.05 317.4	GCO 121.725	UNICOM 122.8 (CTAF)
----------------------------	---	-----------------------	-------------------------------



CATEGORY	A	B	C	D
LPV DA	1987-1	250 (300-1)		NA
LNAV/VNAV DA	2034-1	297 (300-1)		NA
LNAV MDA	2180-1	443 (500-1)	2180-1 ¾ 443 (500-1 ¾)	NA
CIRCLING	2200-1 463 (500-1)	2280-1 543 (600-1)	2280-1 ½ 543 (600-1 ½)	NA



NC-1, 10 JUL 2025 to 07 AUG 2025

NC-1, 10 JUL 2025 to 07 AUG 2025