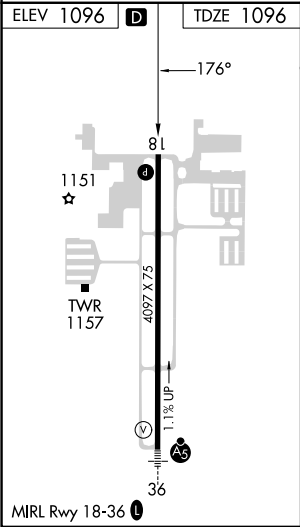
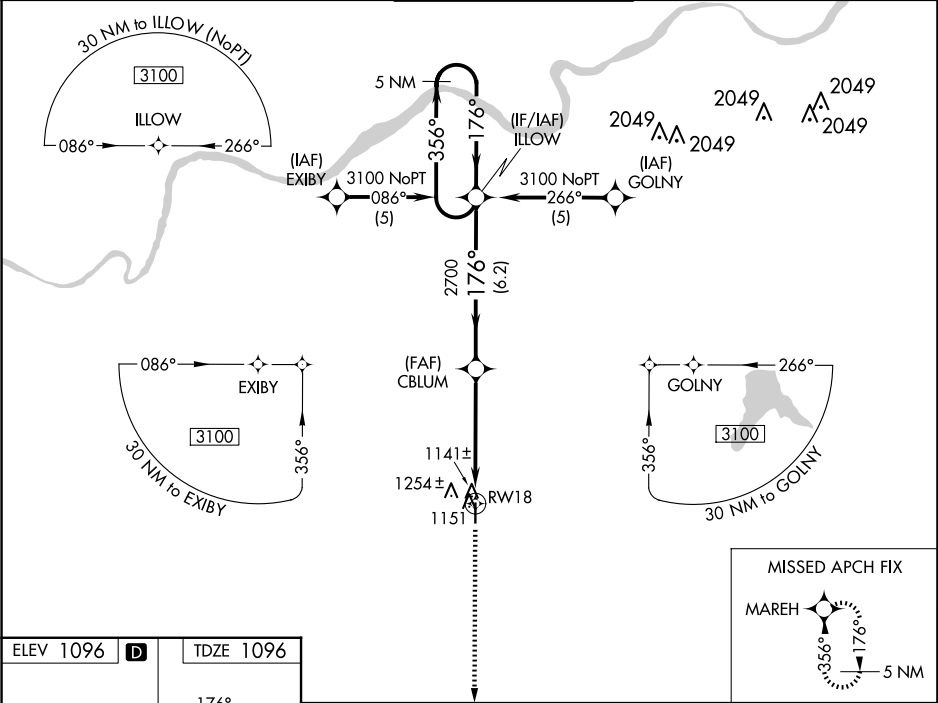


WAAS CH 53700 W18A	APP CRS 176°	Rwy Idg TDZE Apt Elev	4097 1096 1096
--	------------------------	-----------------------------	---

RNAV (GPS) RWY 18

JOHNSON COUNTY EXEC (OJC)

RNP APCH.		MISSED APPROACH: Climb to 3000 direct MAREH and hold.		
▼	For uncompensated Baro-VNAV systems, LNAV/VNAV NA below -17°C or above 54°C.			
ATIS 119.35	KANSAS CITY APP CON 118.9 251.075	EXECUTIVE TOWER★ 126.0 (CTAF) 0 225.4	GND CON 121.6	UNICOM 122.95



3000

↑

MAREH

✦

ILLOW

5 NM Holding Pattern

CBLUM

3100

356°

176°

176°

2700

GP 3.00°

TCH 40

RW18

4.8 NM

6.2 NM

CATEGORY	A	B	C	D
LPV DA	1346-1 250 (300-1)			NA
LNAV/VNAV DA	1527-1½ 431 (500-1½)			NA
LNAV MDA	1560-1	464 (500-1)	1560-1¼ 464 (500-1¼)	NA
CIRCLING	1620-1	524 (600-1)	1620-1½ 524 (600-1½)	NA

NC-2, 10 JUL 2025 to 07 AUG 2025

NC-2, 10 JUL 2025 to 07 AUG 2025