

LOC I-PKX

108.3

APP CRS

356°

Rwy Idg

4097

TDZE

1086

Apt Elev

1096

LOC RWY 36

JOHNSON COUNTY EXEC (OJC)

NA

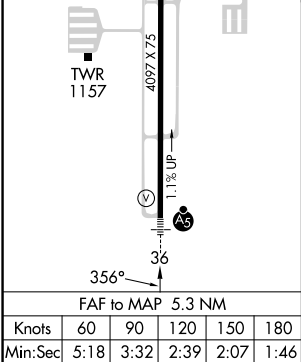
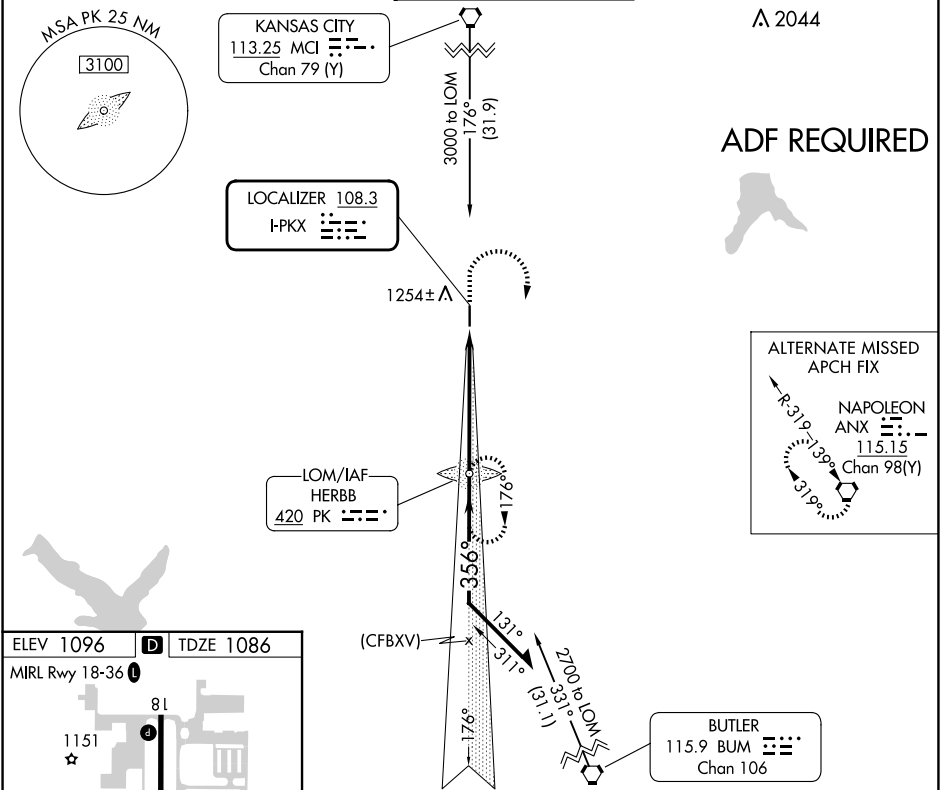
Helicopter visibility reduction below ¾ SM not authorized.  
For inoperative MALSRs, increase S-36 Cats A and B  
visibility ¼ mile.

MALSR

A5

MISSED APPROACH: Climb to 1700  
then climbing right turn to 2700 direct  
HERBB LOM and hold.

ATIS 119.35	KANSAS CITY APP CON 118.9 251.075	EXECUTIVE TOWER★ 126.0 (CTAF) 225.4	GND CON 121.6	UNICOM 122.95
----------------	--------------------------------------	----------------------------------------	------------------	------------------



Remain within 10 NM		PK LOM	1700	2700	PK
2700		176°	356°	2700	2.85° TCH 40
CATEGORY		A	B	C	D
S-36		1580-¾	494 (500-¾)	1580-1 494 (500-1)	NA
CIRCLING		1620-1	524 (600-1)	1620-1½ 524 (600-1½)	NA