

APP CRS	Rwy Idg	7004
180°	TDZE	126
	Apt Elev	126

RNAV (GPS) RWY 18

INDIANOLA MUNI (IDL)

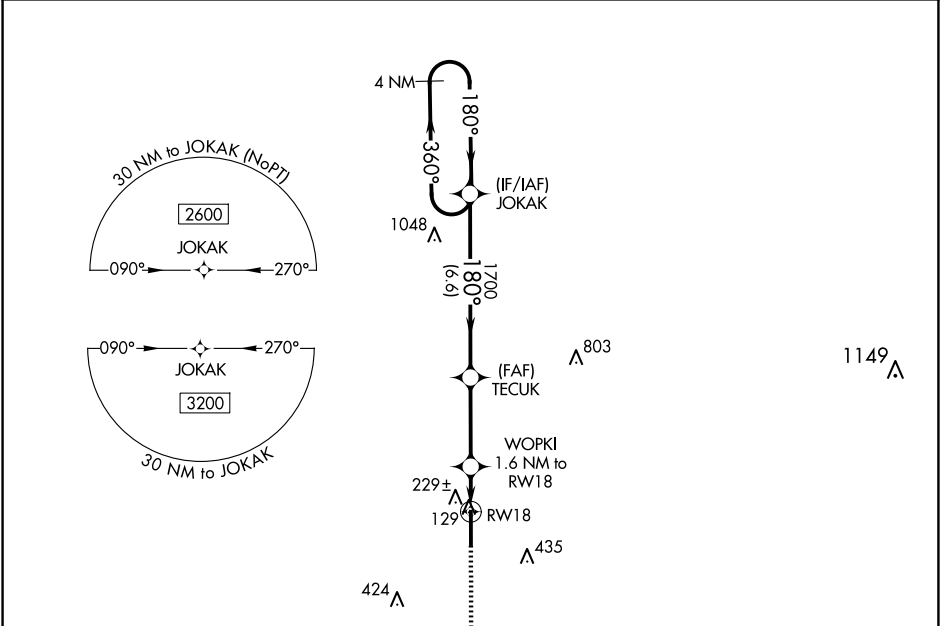
▼

▲NA

DME/DME RNP-0.3 NA. Rwy 18 helicopter visibility reduction below 1 SM NA. Straight-in/Circling to Rwy 18 NA at night. Use Greenville altimeter setting, when not received, use Greenwood altimeter setting and increase all MDA 40 feet, increase LNAV Cat C/D visibility 1/8 SM and Circling Cat C/D visibility 1/4 SM.

MISSED APPROACH: Climb to 2500 direct WUPUK and hold.

GLH ASOS	MEMPHIS CENTER	UNICOM
125.525	135.875 269.35	122.8 (CTAF) 0



MISSED APCH FIX		ELEV 126		TDZE 126	
WUPUK		180° to RW18		81	
4 NM Holding Pattern		JOKAK		2500 WUPUK	
2600		TECUK		1700	
360°		180°		3.04° TCH 45	
180°		1700		680	
6.6 NM		3.2 NM		1.6 NM	
CATEGORY	A	B	C	D	
LNAV MDA	520-1	394 (400-1)	520-1 1/8	394 (400-1 1/8)	
CIRCLING	580-1	600-1	840-2	840-2 1/4	
	454 (500-1)	474 (500-1)	714 (800-2)	714 (800-2 1/4)	
MIRL Rwy 18-36 0					