

WAAS CH 60903 W28A	APP CRS 285°	Rwy Idg TDZE 967 Apt Elev 968
--	------------------------	---

RNAV (GPS) RWY 28

STATESVILLE RGNL (SVH)

RNP APCH - GPS.

▼

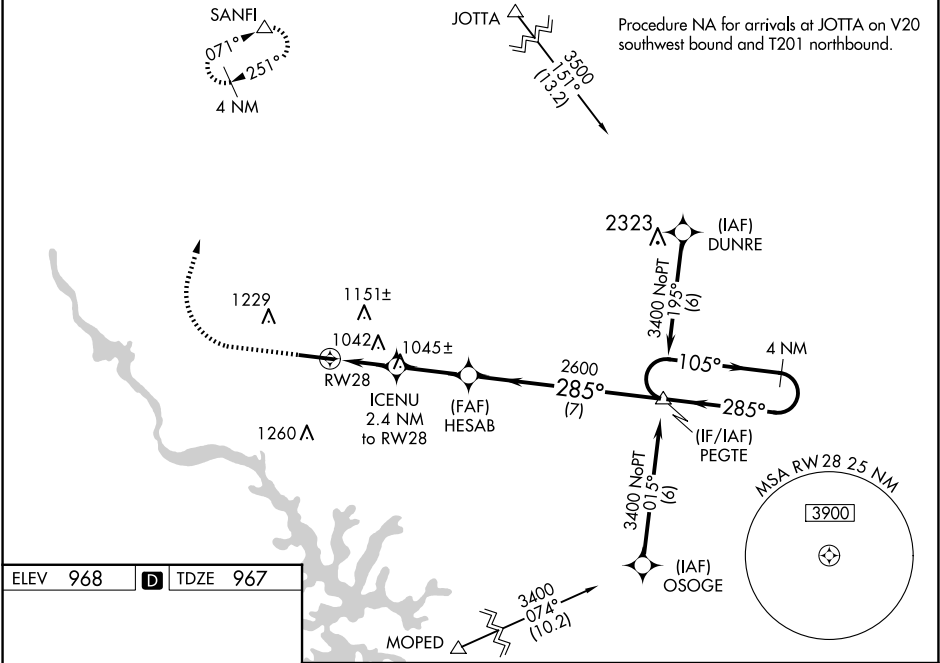
⚠

For uncompensated Baro-VNAV systems, LNAV/VNAV NA below -16°C or above 54°C.
When local altimeter setting not received, use Lincolnnton altimeter setting and increase LPV DA to 1218, LNAV/VNAV DA to 1269, and all MDA 60 feet; increase LNAV/VNAV all Cats and LNAV Cats C/D visibility $\frac{1}{8}$, and Circling Cat C $\frac{1}{4}$ mile. VDP and Baro-VNAV NA when using Lincolnnton altimeter setting. For inop MALSRL, increase LNAV/VNAV all Cats and LNAV Cats C/D visibility to $\frac{3}{8}$ mile. For inop MALSRL when using Lincolnnton altimeter setting, increase LNAV/VNAV all Cats and LNAV Cats C/D visibility to 1 mile.

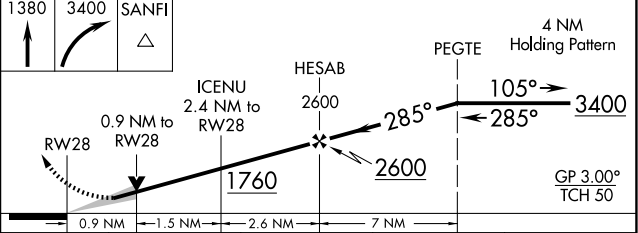
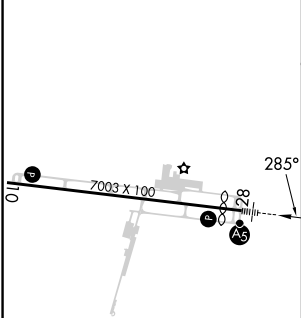
MALSRL

MISSED APPROACH:
Climb to 1380 then climbing right turn to 3400 direct SANFI and hold.

AWOS-3 119.225	ATLANTA CENTER 125.15 263.0	UNICOM 123.075 (CTAF) 1
--------------------------	---------------------------------------	-----------------------------------



ELEV 968	D	TDZE 967
----------	----------	----------



CATEGORY	A	B	C	D
LPV DA		1167- $\frac{3}{4}$	200 (200- $\frac{3}{4}$)	
LNAV/VNAV DA		1218- $\frac{3}{4}$	251 (300- $\frac{3}{4}$)	
LNAV MDA		1300- $\frac{3}{4}$	333 (400- $\frac{3}{4}$)	
C CIRCLING	1420-1 452 (500-1)	1540-1 572 (600-1)	1540-1 $\frac{1}{2}$ 572 (600-1 $\frac{1}{2}$)	1560-2 592 (600-2)