

LOC/DME I-SVH	APP CRS	Rwy Idg	6453
111.75	285°	TDZE	967
Chan 54 (Y)		Apt Elev	968

ILS Y or LOC Y RWY 28

STATESVILLE RGNL (SVH)

DME required.

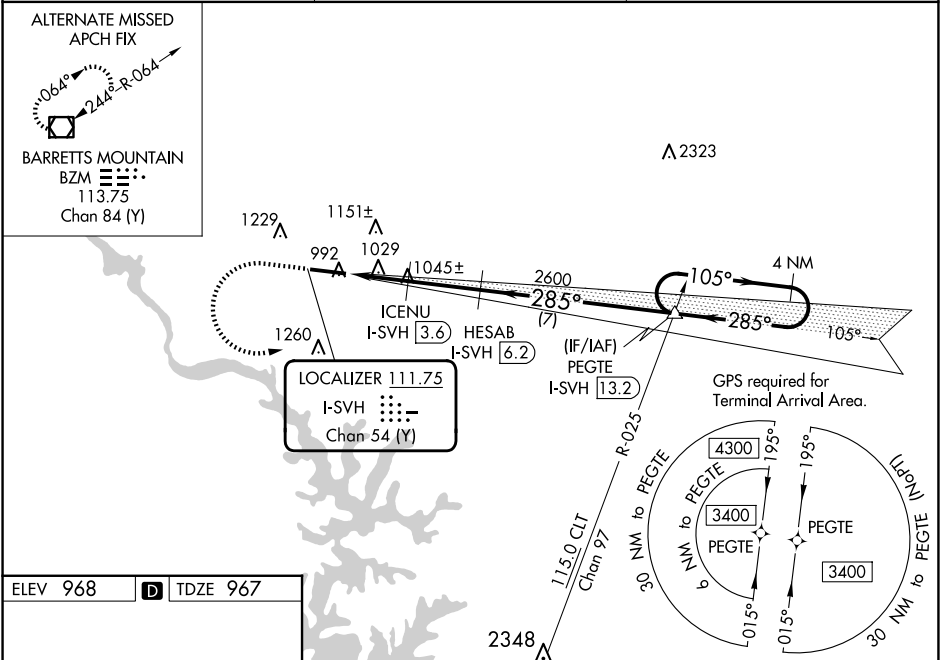
▼

When local altimeter setting not received, use Lincolnton altimeter setting and increase ILS DA to 1219 and all MDA 60 feet; increase S-LOC 28 Cats C/D visibility ¾ mile and Circling Cat C visibility ¼ mile. VDP NA when using Lincolnton altimeter setting. For inop MALSRR when using Lincolnton altimeter setting, increase S-ILS 28 all Cats visibility to ¾ mile and S-LOC 28 Cats C/D visibility to 1 mile.

MALSRR

MISSED APPROACH: Climb to 1700 then climbing left turn to 3400 on heading 105° and on CLT VOR/DME R-025 to PEGTE INT/I-SVH 13.2 DME and hold.

AWOS-3 119.225	ATLANTA CENTER 125.15 263.0	UNICOM 123.075 (CTAF) 0
-------------------	--------------------------------	----------------------------



1229

1151±

1029

1045±

2600

285°

7

105°

4 NM

105°

105°

ICENU I-SVH 3.6

HESAB I-SVH 6.2

LOCALIZER 111.75

I-SVH

Chan 54 (Y)

(IF/IAF) PEGTE I-SVH 13.2

GPS required for Terminal Arrival Area.

30 NM to PEGTE

30 NM to PEGTE

30 NM to PEGTE

30 NM to PEGTE

115.0 CLT Chan 97

2348

1700

3400

CLT R-025

hdg 105°

PEGTE

HESAB I-SVH 6.2

ICENU I-SVH 3.6

I-SVH 2

I-SVH 1.2

2600

1760

2600

285°

105°

3400

4 NM Holding Pattern

GS 3.00°

TCH 50

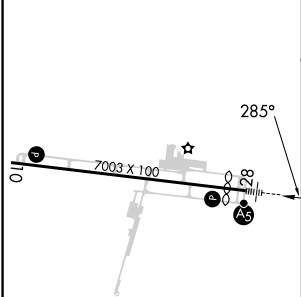
0.8

1.6

2.6 NM

7 NM

ELEV 968	D	TDZE 967
----------	---	----------



CATEGORY	A	B	C	D
S-ILS 28	1167-½ 200 (200-½)			
S-LOC 28	1280-½ 313 (400-½)			
CIRCLING	1420-1 452 (500-1)	1540-1 572 (600-1)	1540-1½ 572 (600-1½)	1560-2 592 (600-2)