

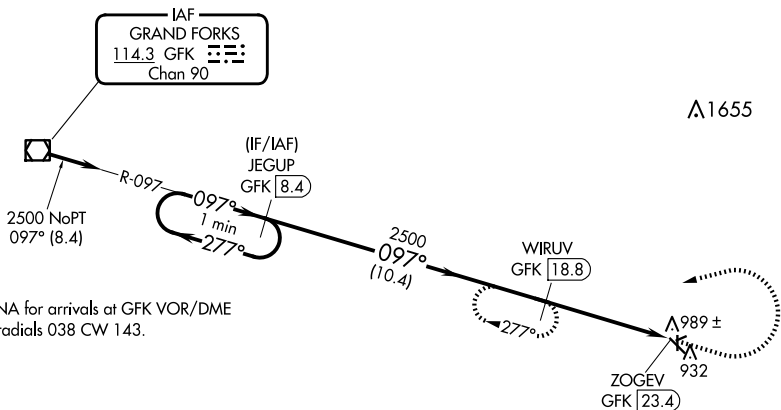
VOR/DME GFK <b>114.3</b> Chan <b>90</b>	APP CRS <b>097°</b>	Rwy Idg <b>4300</b> TDZE <b>896</b> Apt Elev <b>900</b>
---	------------------------	---

VOR/DME RWY 13

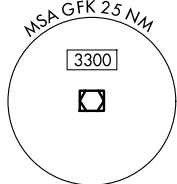
CROOKSTON MUNI/KIRKWOOD FLD (CKN)

- |   |   |
|---|---|
| <p><b>T</b> When local altimeter setting not received, use Grand Forks Intl altimeter setting. Circling Rwys 6, 24, 17, 35 NA at night.</p> | <p><b>MISSED APPROACH:</b> Climb to 2000 then climbing left turn to 2500 heading 250° and GFK VOR/DME R-097 to WIRUW/GFK 18.8 DME and hold.</p> |
|---|---|

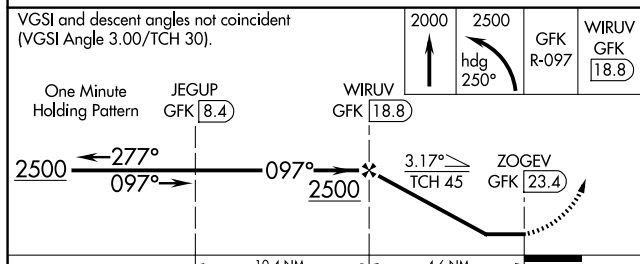
AWOS-3 <b>126.425</b>	GRAND FORKS APP CON ★ <b>118.1 318.1</b>	UNICOM <b>122.7</b> (CTAF) <b>0</b>
--------------------------	---	--



Procedure NA for arrivals at GFK VOR/DME  
on airway radials 038 CW 143.



VGSI and descent angles not coincident  
(VGSI Angle 3.00/TCH 30).



CATEGORY	10.2 NM		4.6 NM		D
	A	B	C		
S-13	1400-1	504 (500-1)	1400-1 <sup>3</sup> / <sub>8</sub> 504 (500-1 <sup>3</sup> / <sub>8</sub> )		NA
CIRCLING	1400-1	500 (500-1)	1480-1 <sup>1</sup> / <sub>2</sub> 580 (600-1 <sup>1</sup> / <sub>2</sub> )		NA
GRAND FORKS INTL ALTIMETER MINIMUMS					
S-13	1480-1	584 (600-1)	1480-1 <sup>3</sup> / <sub>4</sub> 584 (600-1 <sup>3</sup> / <sub>4</sub> )		NA
CIRCLING	1480-1	580 (600-1)	1560-1 <sup>3</sup> / <sub>4</sub> 660 (700-1 <sup>3</sup> / <sub>4</sub> )		NA

