

WAAS

CH **69304**

**W31A**

APP CRS

**308°**

Rwy Idg

**4300**

TDZE

**897**

Apt Elev

**900**

**RNAV (GPS) RWY 31**

CROOKSTON MUNI/KIRKWOOD FLD (CKN)

RNP APCH.

⚠

Baro-VNAV NA when using Grand Forks altimeter setting. For uncompensated Baro-VNAV systems, LNAV/VNAV NA below -16°C (4°F) or above 54°C (130°F). When local altimeter setting not received, use Grand Forks altimeter setting and increase LPV DA to 1219 feet and LNAV/VNAV DA to 1382 feet, increase all MDAs 80 feet and Circling Cat C visibility ¼ SM. Visibility reduction by helicopters NA. Circling Rwy 6, 24, 17, 35 NA at night.

MISSED APPROACH:

Climb to 3000 direct AVINE and hold.

AWOS-3

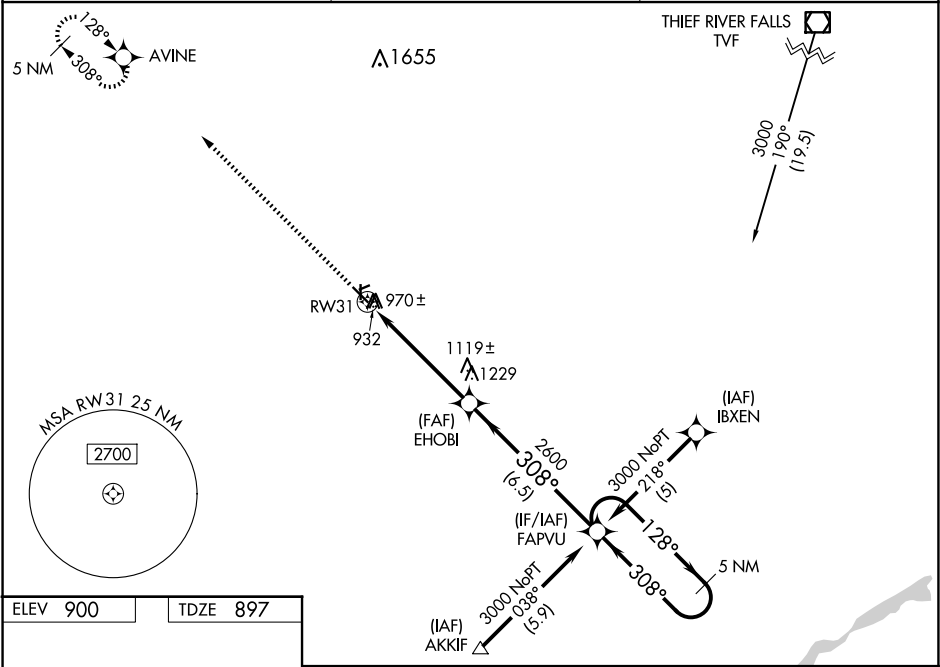
**126.425**

GRAND FORKS APP CON★

**118.1 318.1**

UNICOM

**122.7 (CTAF) 1**



ELEV 900

TDZE 897

REIL Rwy 13 and 31 1

MIRL Rwy 13-31 1

CROOKSTON, MINNESOTA

Orig-C 04NOV21

CROOKSTON MUNI/KIRKWOOD FLD (CKN)

47°51'N-96°37'W

**RNAV (GPS) RWY 31**

NC-1, 10 JUL 2025 to 07 AUG 2025

NC-1, 10 JUL 2025 to 07 AUG 2025