

WAAS CH 72704 W13A	APP CRS 128°	Rwy Idg 4300 TDZE 896 Apt Elev 900
--	------------------------	---

RNAV (GPS) RWY 13

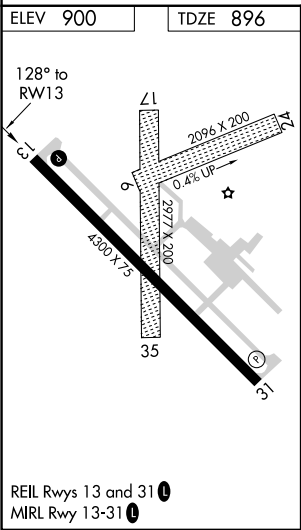
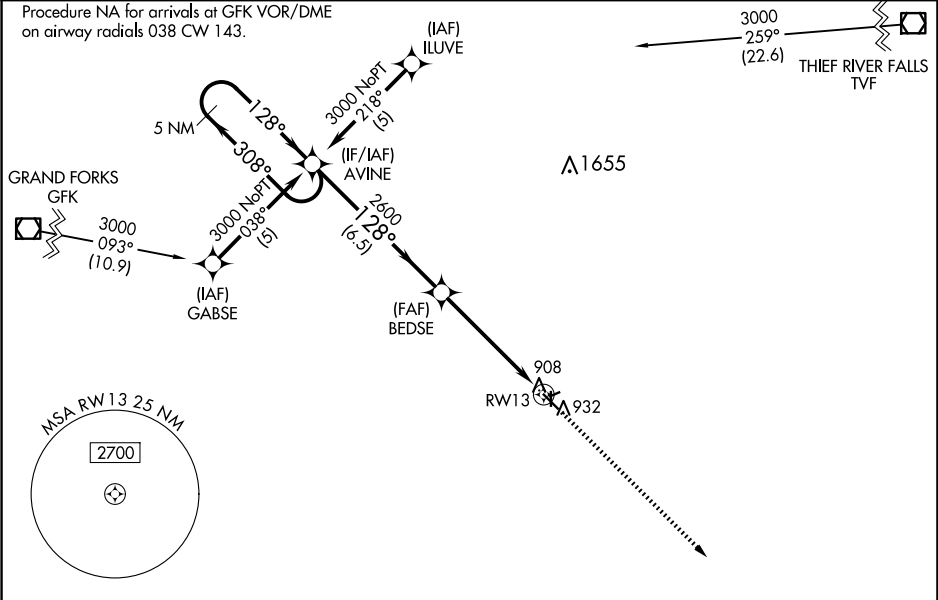
CROOKSTON MUNI/KIRKWOOD FLD (CKN)

RNP APCH

▼ Baro-VNAV NA when using Grand Forks altimeter setting. For uncompensated Baro-VNAV systems, LNAV/VNAV NA below -16°C (4°F) or above 54°C (130°F). When local altimeter setting not received, use Grand Forks altimeter setting and increase LPV DA to 1208 feet and LNAV/VNAV DA to 1272 feet; increase all MDA's 80 feet and Circling Cat C visibility ¼ SM. Circling Rwys 6, 24, 17, 35 NA at night.

MISSED APPROACH: Climb to 3000 direct FAPVU and hold.

AWOS-3 126.425	GRAND FORKS APP CON ★ 118.1 318.1	UNICOM 122.7 (CTAF) ①
--------------------------	---	---------------------------------



VGSI and RNAV glidepath not coincident (VGSI Angle 3.00/TCH 30).				
5 NM Holding Pattern				
GP 3.00° TCH 40				
CATEGORY	A	B	C	D
LPV DA	1146-1	250 (300-1)		NA
LNAV/VNAV DA	1210-1	314 (400-1)		NA
LNAV MDA	1360-1	464 (500-1)	1360-1¼ 464 (500-1¼)	NA
CIRCLING	1360-1	460 (500-1)	1480-1½ 580 (600-1½)	NA