

VOR/DME ANW 112.7 Chan 74	APP CRS 008°	Rwy Idg TDZE 2589 Apt Elev 2589
---	------------------------	---

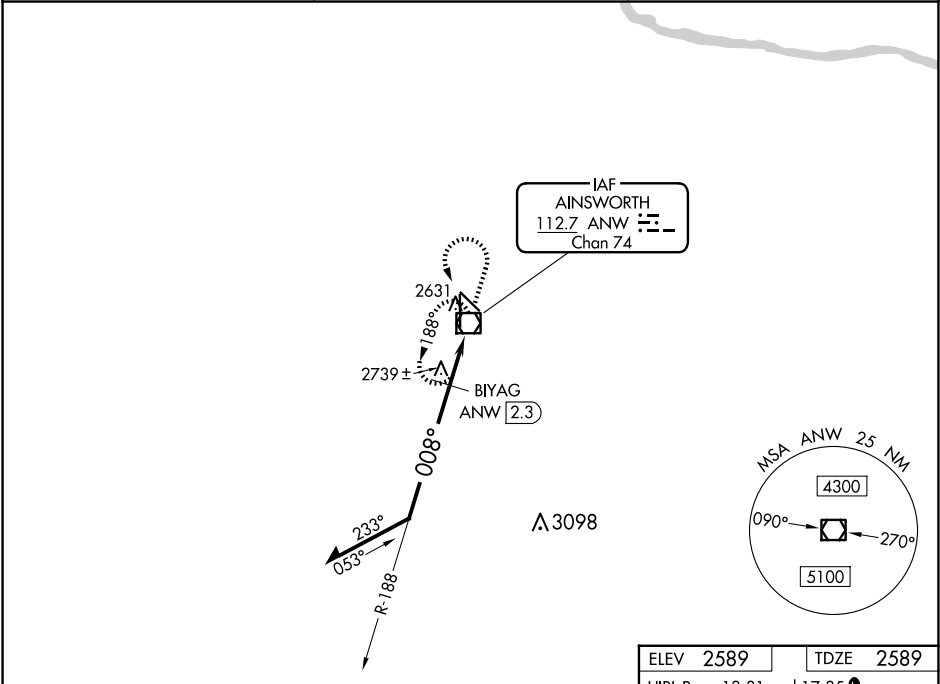
VOR RWY 35
AINSWORTH RGNL (ANW)

⚠ When local altimeter setting not received, procedure NA.
⚠ For inoperative ALS, increase BIYAG fix minimums S-35 Cat D visibility to 1¼.

MALSR

MISSED APPROACH: Climb to 3500 then climbing left turn to 6000 direct ANW VOR/DME and hold.

AWOS-3 118.325	DENVER CENTER 127.95 338.2	UNICOM 122.8 (CTAF) 0
--------------------------	--------------------------------------	---------------------------------



Remain within 10 NM

ANW VOR/DME 6000

BIYAG ANW 2.3

ANW 1.3

TCH 45

2.99°

188°

008°

3300

4500

1 NM

1.2 NM

CATEGORY	A	B	C	D
S-35	3300-½ 711 (800-½)		3300-1½ 711 (800-1½)	3300-1¾ 711 (800-1¾)
CIRCLING	3300-1 711 (800-1)		3300-2 711 (800-2)	3300-2¼ 711 (800-2¼)
BIYAG FIX MINIMUMS (DME REQUIRED)				
S-35	3000-½ 411 (500-½)		3000-¾ 411 (500-¾)	3000-1 411 (500-1)
CIRCLING	3000-1 411 (500-1)	3040-1 451 (500-1)	3040-1½ 451 (500-1½)	3200-2 611 (700-2)

ELEV 2589	TDZE 2589
-----------	-----------

HIRL Rwys 13-31 and 17-35

REIL Rwy 31

NC-2, 10 JUL 2025 to 07 AUG 2025

NC-2, 10 JUL 2025 to 07 AUG 2025