

WAAS CH 70417 W17A	APP CRS 173°	Rwy Idg TDZE Apt Elev	6824 2589 2589
--	------------------------	-----------------------------	---

RNAV (GPS) RWY 17

AINSWORTH RGNL (ANW)

RNP APCH.

▼

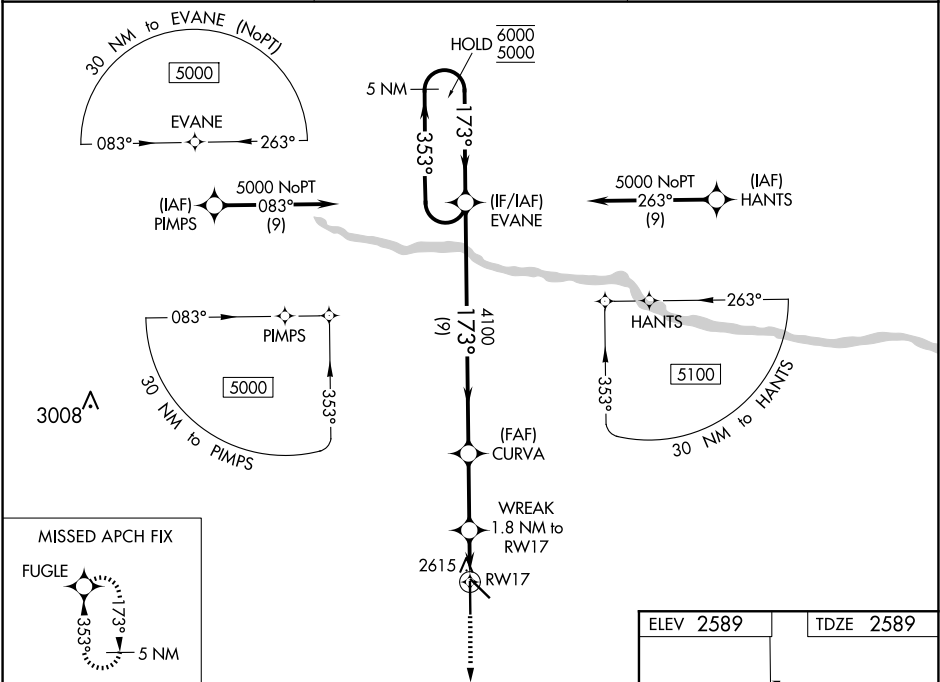
▲

For uncompensated Baro-VNAV systems, LNAV/VNAV NA below -20°C or above 54°C. For inop ALS, increase LNAV/VNAV all Cats visibility to ¾ SM, and LNAV Cats C/D visibility to ¾ SM.

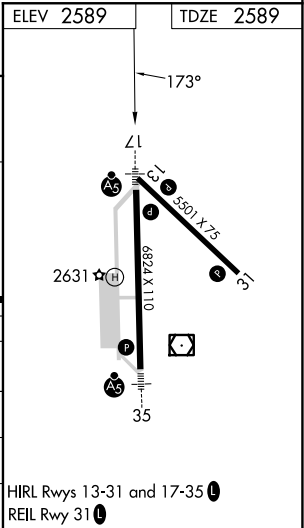
MALSR

MISSED APPROACH: Climb to 5100 direct FUGLE and hold.

AWOS-3 118.325	DENVER CENTER 127.95 338.2	UNICOM 122.8 (CTAF) 1
--------------------------	--------------------------------------	--



5 NM Holding Pattern		EVANE	CURVA	WREAK 1.8 NM to RWY17	5100 FUGLE
6000 5000		353° 173°	173°	4100	*LNAV only
GP 3.00° TCH 46				*0.7 NM to RWY17	
		9 NM	2.8 NM	1.1 NM	0.7 NM
CATEGORY	A	B	C	D	
LPV DA		2789-½	200 (200-½)		
LNAV/VNAV DA		2839-½	250 (300-½)		
LNAV MDA		2880-½	291 (300-½)		
CIRCLING	3000-1 411 (500-1)	3040-1 451 (500-1)	3040-1½ 451 (500-1½)	3200-2 611 (700-2)	



NC-2, 10 JUL 2025 to 07 AUG 2025

NC-2, 10 JUL 2025 to 07 AUG 2025