

## DESTIN, FLORIDA

AL-5680 (FAA)

25107

WAAS CH <b>56623</b> <b>W32A</b>	APP CRS <b>323°</b>	Rwy Idg <b>5001</b> TDZE <b>20</b> Apt Elev <b>22</b>
--	------------------------	---

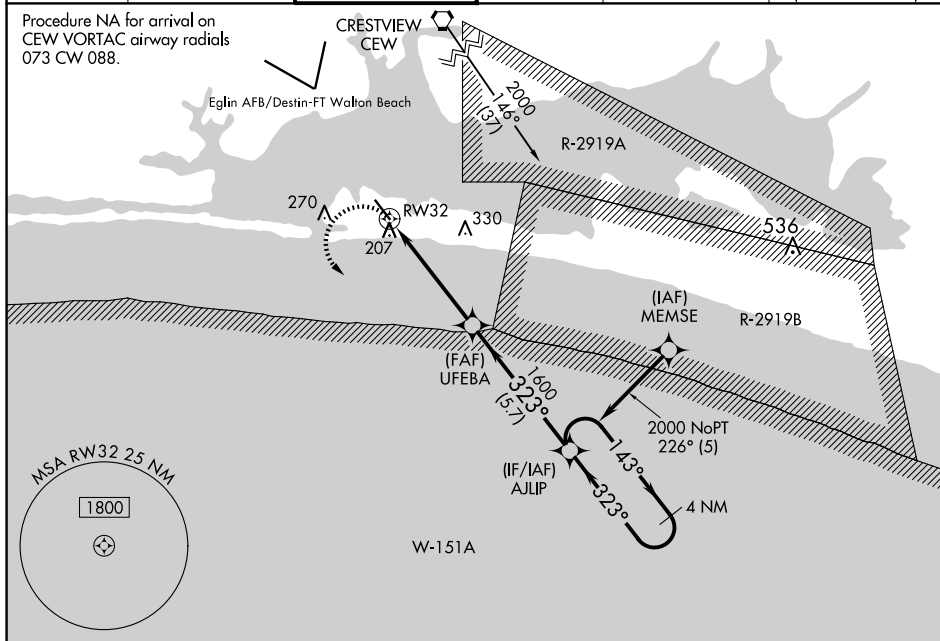
RNAV (GPS) RWY 32  
DESTIN EXEC (DTS)

**▼** Rwy 32 helicopter visibility reduction below  $\frac{3}{4}$  SM NA. DME/DME RNP-0.3 NA. VDP NA when using Crestview altimeter setting. When local altimeter setting not received, use Crestview altimeter setting and increase all MDA 80 feet; increase LP Cats C and D visibility  $\frac{1}{4}$  SM, increase LNAV Cats C and D visibility  $\frac{3}{8}$  SM, and increase Circling Cat C visibility  $\frac{1}{4}$  SM.

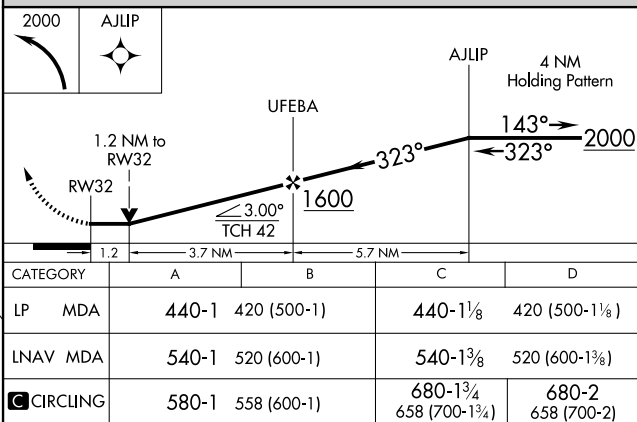
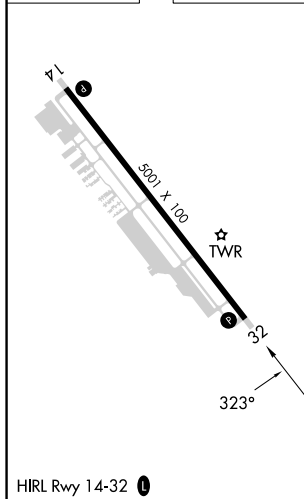
**MISSED APPROACH:**  
Climbing left turn to  
2000 direct AJLP and  
hold.

ATIS 133.925	EGLN APP CON 132.1 360.6	DESTIN TOWER ★ 118.45 (CTAF) 0	GND CON 121.6	CLNC DEL 121.6 377.2	CLNC DEL 127.7 (When twr closed)
-----------------	-----------------------------	-----------------------------------	------------------	-------------------------	--

Procedure NA for arrival on  
CEW VORTAC airway radials  
073 CW 088.



ELEV 22		TDZE 20
---------	--	---------



DESTIN, FLORIDA  
Amdt 1C 07DEC17

30°24'N-86°28'W

DESTIN EXEC (DTS)  
RNAV (GPS) RWY 32

SE-3, 10 JUL 2025 to 07 AUG 2025