

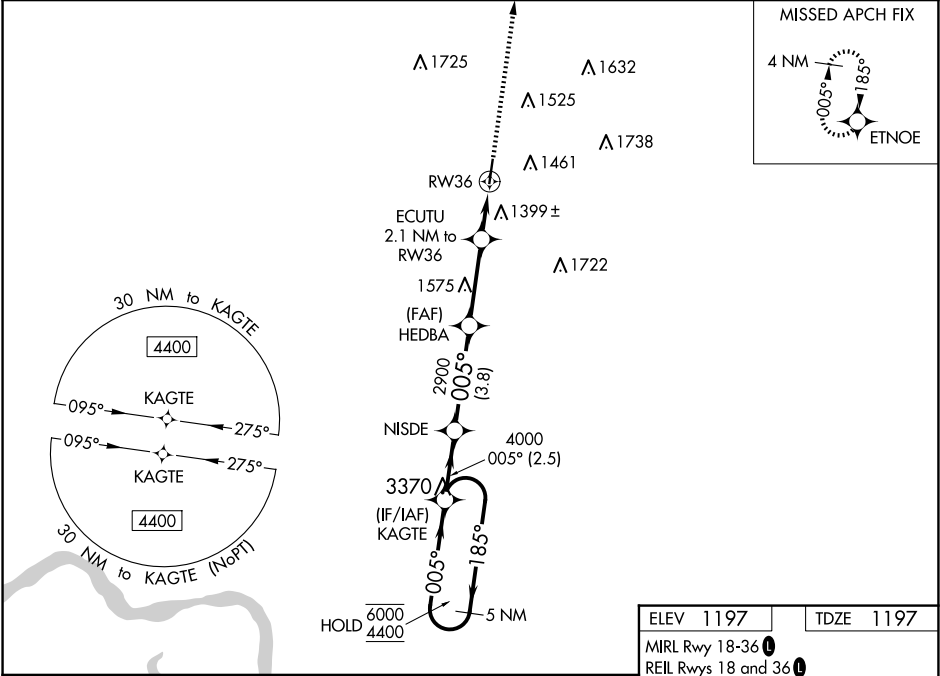
WAAS CH 42516 W36A	APP CRS 005°	Rwy Ldg TDZE 1197 Apt Elev 1197
--	------------------------	---

RNAV (GPS) RWY 36

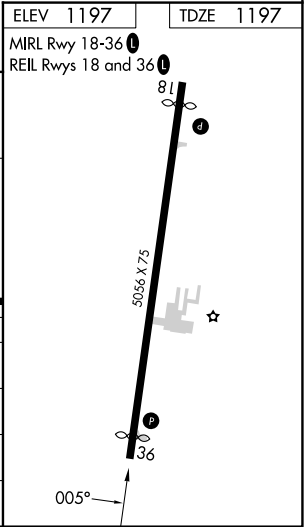
LE MARS MUNI (L.R.J)

RNP APCH - GPS.	MISSED APPROACH: Climb to 4000 direct ETNOE and hold.
<div><div><div>▼</div><div>⚠</div><div>❄</div></div><div>Rwy 36 helicopter visibility reduction below 1 SM NA. For uncompensated Baro-VNAV systems, LNAV/VNAV NA below -17°C or above 54°C.</div></div>	

AWOS-3P 120.975	SIOUX CITY APP CON ★ 124.6 307.0	UNICOM 122.8 (CTAF) 0
---------------------------	--	---------------------------------



5 NM Holding Pattern		KAGTE		NISDE		HEDBA		ECUTU 2.1 NM to RW36		4000	ETNOE
6000 ← 185°		← 005°		005°		4000		2900		1900	
GP 3.00°		TCH 40		2.5 NM		3.8 NM		3.1 NM		2.1 NM	
CATEGORY		A		B		C		D			
LPV DA		1469-1 272 (300-1)				NA					
LNAV/VNAV DA		1723-178 526 (600-178)				NA					
LNAV MDA		1660-1 463 (500-1)		1660-178 463 (500-178)		NA					
CIRCLING		1760-1 563 (600-1)		1780-1 583 (600-1)		1840-174 643 (700-174)		NA			



NC-3, 10 JUL 2025 to 07 AUG 2025

NC-3, 10 JUL 2025 to 07 AUG 2025