

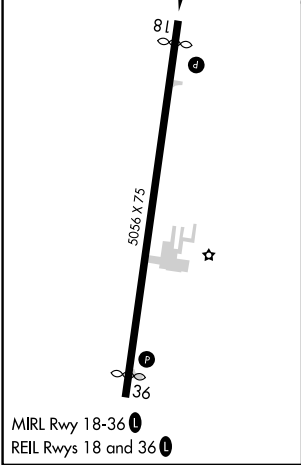
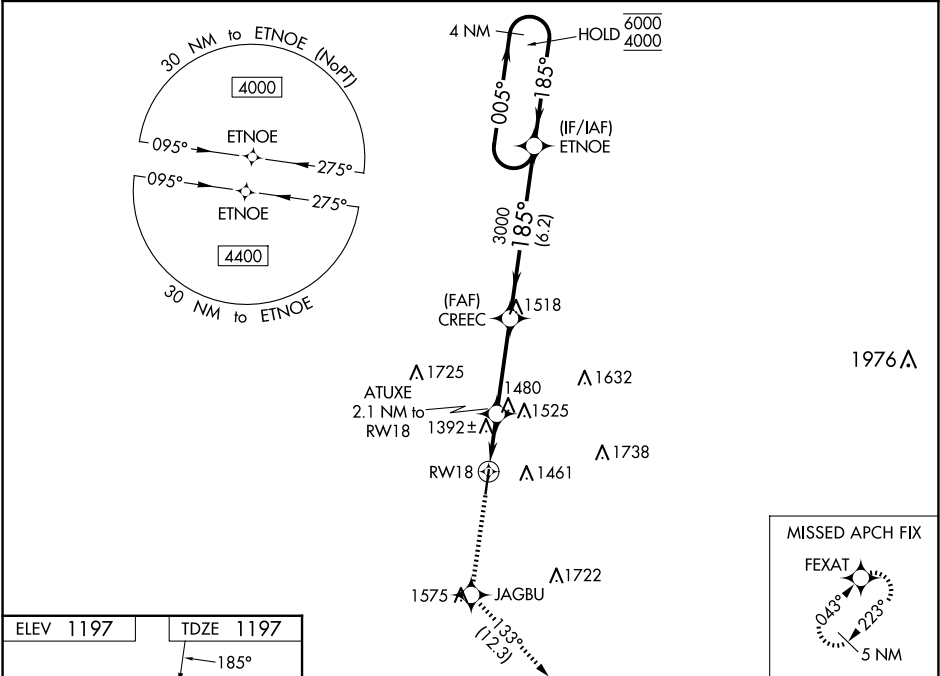
WAAS CH <b>78415</b> <b>W18A</b>	APP CRS <b>185°</b>	Rwy Ldg TDZE <b>1197</b> Apt Elev <b>1197</b>
--	------------------------	---

RNAV (GPS) RWY 18

LE MARS MUNI (LRJ)

RNP APCH.	MISSED APPROACH: Climb to 4500 direct JAGBU and on track 133° to FEXAT and hold.
<div><div><div><div></div><div></div><div></div></div><div><div></div><div></div><div></div></div><div><div></div><div></div><div></div></div></div><div>Rwy 18 helicopter visibility reduction below <math>\frac{3}{4}</math> SM NA. For uncompensated Baro-VNAV systems, LNAV/VNAV NA below -17°C or above 54°C.</div></div> <div>-23°C</div>	

AWOS-3P <b>120.975</b>	SIOUX CITY APP CON * <b>124.6 307.0</b>	UNICOM <b>122.8 (CTAF) 0</b>
---------------------------	--	---------------------------------



4500	JAGBU	tr	133°	FEXAT	VGSI and RNAV glidepath not coincident (VGSI Angle 3.00/TCH 21).	4 NM	ETNOE	Holding Pattern
*LNAV only	ATUXE 2.1 NM to RWY18	*1.3 NM to RWY18	RWY18	1900*	3000	185°	005°	6000 4000
	1.3 NM	0.8 NM	3.5 NM	6.2 NM				GP 3.00° TCH 40
CATEGORY	A	B	C	D				
LPV DA	1479-1	282 (300-1)		NA				
LNAV/VNAV DA	1691-1 $\frac{3}{8}$	494 (500-1 $\frac{3}{8}$ )		NA				
LNAV MDA	1660-1	463 (500-1)	1660-1 $\frac{3}{8}$ 463 (500-1 $\frac{3}{8}$ )	NA				
CIRCLING	1760-1 563 (600-1)	1780-1 583 (600-1)	1840-1 $\frac{3}{4}$ 643 (700-1 $\frac{3}{4}$ )	NA				