

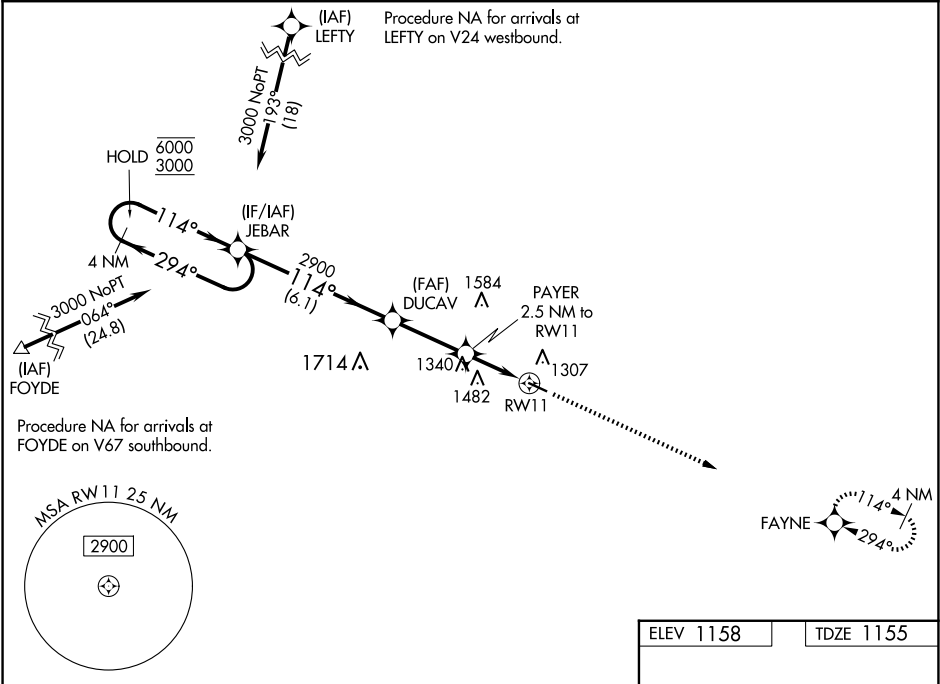
WAAS CH 78021 W11A	APP CRS 114°	Rwy Idg 4001 TDZE 1155 Apt Elev 1158
--	------------------------	---

RNAV (GPS) RWY 11

DECORAH MUNI (DEH)

RNP APCH - GPS.	MISSED APPROACH: Climb to 3200 direct FAYNE and hold.
For uncompensated Baro-VNAV systems, LNAV/VNAV NA below -17°C or above 54°C.	

AWOS-3 120.925	MINNEAPOLIS CENTER 118.85	UNICOM 122.8 (CTAF) 0
--------------------------	-------------------------------------	--



4 NM Holding Pattern		JEBAR	DUCAV	PAYER 2.5 NM to RW11	1.3 NM to RW11	RW11
6000 ← 294°		114° →	2900	1980	1.3 NM	
GP 3.00°						
TCH 40						
		6.1 NM	2.9 NM	1.2 NM	1.3 NM	
CATEGORY	A	B	C	D		
LPV DA	1405-1	250 (300-1)	NA			
LNAV/VNAV DA	1405-1	250 (300-1)	NA			
LNAV MDA	1600-1	445 (500-1)	NA			
CIRCLING	1620-1	462 (500-1)	NA			

ELEV 1158 TDZE 1155

3200 ↑

FAYNE

114°

0.3% UP

4001 X.75

120

REIL Rwy 11 and 29 **0**
MIRL Rwy 11-29 **0**

NC-3, 10 JUL 2025 to 07 AUG 2025

NC-3, 10 JUL 2025 to 07 AUG 2025