

WAAS CH <b>97511</b> <b>W33A</b>	APP CRS <b>331°</b>	Rwy Ldg TDZE Apt Elev
		<b>8500</b> <b>5020</b> <b>5020</b>

RNAV (GPS) RWY 33

NORTHERN COLORADO RGNL (FNL)

RNP APCH-GPS.

⚠

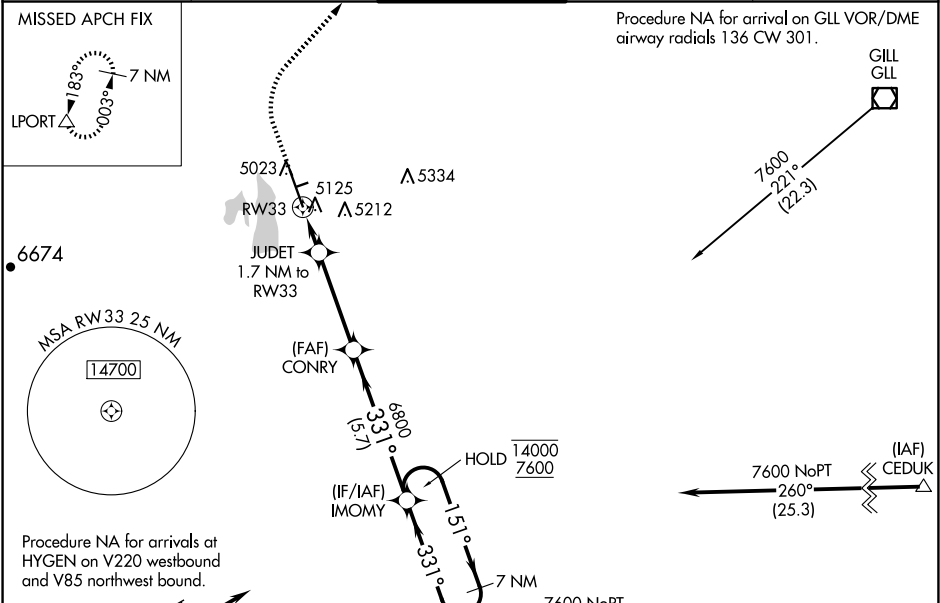
⚠

Circling Rwy 24 NA at night. For uncompensated Baro-VNAV systems, LNAV/VNAV NA below -24°C or above 54°C. For inop ALS, increase LNAV/VNAV all Cats visibility to ¾ SM and LNAV visibility Cat C/D to 1 SM.

MALSR

MISSED APPROACH: Climb to 5600, then climbing right turn to 7400 direct LPORT and hold.

ATIS <b>135.075</b>	DENVER APP CON <b>134.85 251.125</b>	NOCO TOWER★ <b>118.4 (CTAF) 0</b>	GND CON <b>121.65</b>	CLNC DEL <b>120.25</b> (When twr closed)
------------------------	---	--------------------------------------	--------------------------	--



7600 NoPT 051° (13.6)  
 (IAF) HYGEN

Procedure NA for arrival on DVV VORTAC airway radials 257 CW 314.

7600 NoPT 319° (26.2)  
 (IAF) MILE HIGH DVV

5600 7400 LPOR  $\triangle$   
 IMOMY 7 NM Holding Pattern

CONRY 6800 151° 14000  
 331° 7600  
 6800

JUDET 1.7 NM to RW33  
 1 NM to RW33  
 RW33

5620  
 GP 3.00° TCH 51

1 NM 0.8 3.7 NM 5.7 NM

CATEGORY	A	B	C	D
LPV DA	5220-½		200 (200-½)	
LNAV/VNAV DA	5329-½		309 (400-½)	
LNAV MDA	5380-½	360 (400-½)	5380-⅝	360 (400-⅝)
CIRCLING	5480-1 460 (500-1)	5520-1 500 (500-1)	5520-1½ 500 (500-1½)	5700-2¼ 680 (700-2¼)

ELEV 5020 **D** TDZE 5020

51  
 0.5% UP  
 2189 X 40  
 8500 X 150  
 0.5% DOWN  
 33  
 331°

REIL Rwy 15 **L**  
 HIRL Rwy 15-33 **L**