

APP CRS
151°

Rwy Ldg
TDZE
4990

Apt Elev
5020

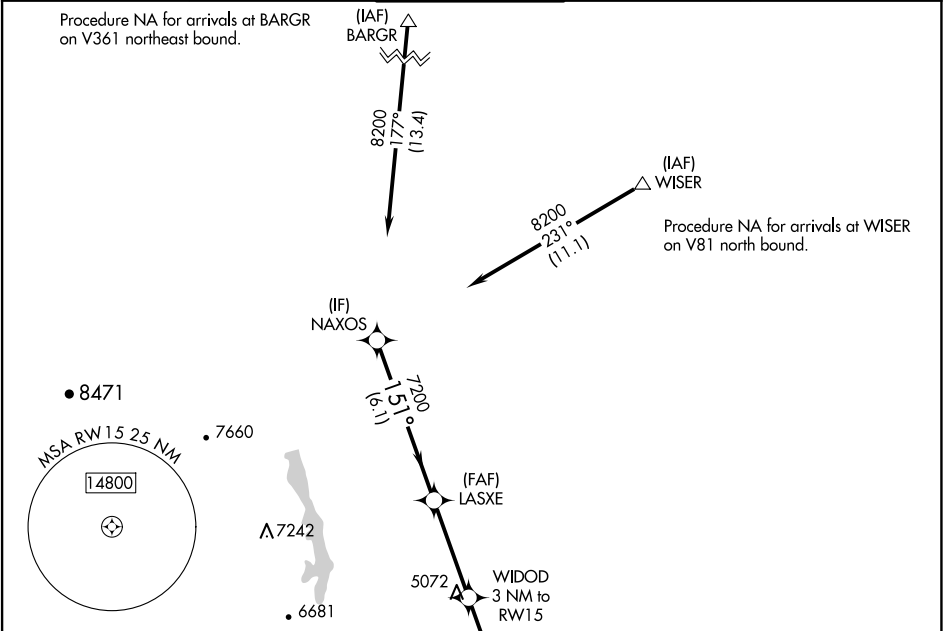
RNAV (GPS) RWY 15

NORTHERN COLORADO RGNL (FNL)

RNP APCH-GPS.

MISSED APPROACH: Climb to 7600 direct IMOMY and hold.

ATIS 135.075	DENVER APP CON 134.85 251.125	NOCO TOWER★ 118.4 (CTAF) 0	GND CON 121.65	CLNC DEL 120.25 (When twr closed)
------------------------	---	--------------------------------------	--------------------------	--



ELEV 5020 TDZE 4990

151°

0.5% UP

0.5% DOWN

2189 X 40

8500 X 100

33

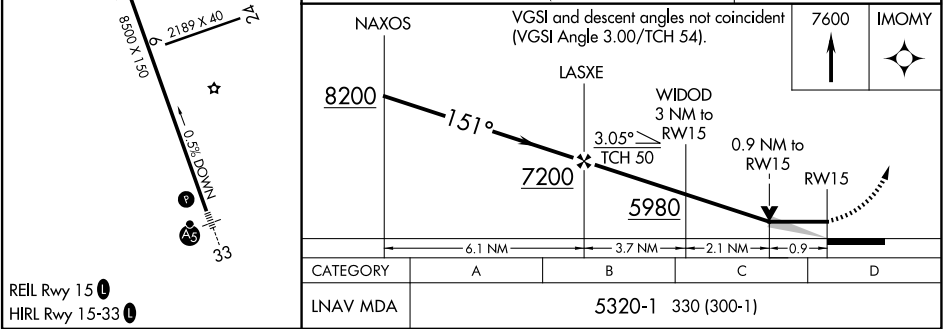
MISSED APCH FIX

IMOMY

151°

333

7 NM



SW-1, 10 JUL 2025 to 07 AUG 2025

SW-1, 10 JUL 2025 to 07 AUG 2025