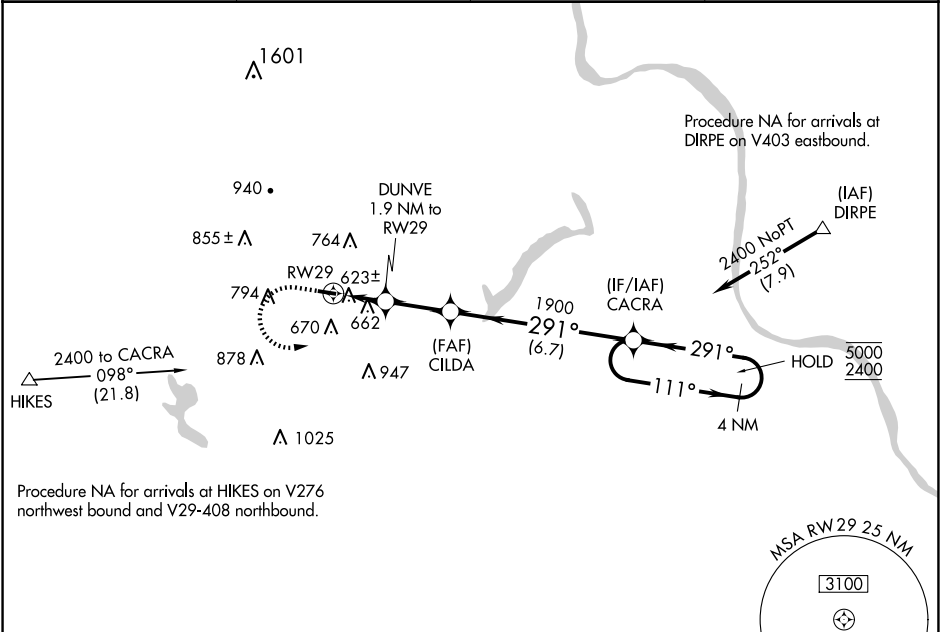


WAAS CH 61228 W29A	APP CRS 291°	Rwy Idg TDZE Apt Elev	3020 525 525
--	------------------------	-----------------------------	---

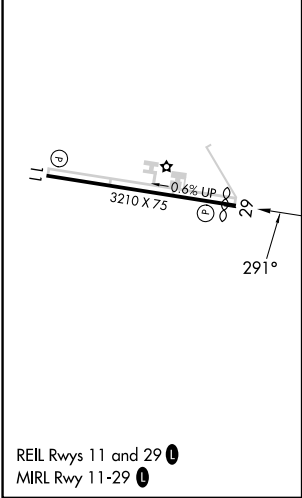
RNAV (GPS) RWY 29

QUAKERTOWN (UKT)

RNP APCH - GPS.		MISSED APPROACH: Climb to 1000, then climbing left turn to 2400 direct CACRA and hold.	
<div>▼</div>	Circling Rwy 11 NA at night.		
<div>▲</div>	Rwy 29 helicopter visibility reduction below ¾ SM NA.		
AWOS-3 119.475	PHILADELPHIA APP CON 123.8 291.7	CLNC DEL 118.55	UNICOM 122.725 (CTAF) 0



ELEV 525	<div>D</div>	TDZE 525
----------	--------------	----------



1000		2400	CACRA	Visual Segment - Obstacles.	
<div>↑</div>		<div>↩</div>	<div>✦</div>		
		DUNVE 1.9 NM to RW29	CILDA	CACRA 4 NM Holding Pattern	
		RW29	1900	111° → 5000 ← 291° 2400	
		1.9 NM	2.4 NM	6.7 NM	
CATEGORY	A	B	C	D	
LP MDA	920-1	395 (400-1)	920-1½ 395 (400-1½)	NA	
LNAV MDA	960-1	435 (500-1)	960-1¼ 435 (500-1¼)	NA	
<div>C</div> CIRCLING	1040-1 515 (600-1)	1080-1 555 (600-1)	1220-2 695 (700-2)	NA	