

WAAS CH <b>82345</b> <b>W33A</b>	APP CRS <b>335°</b>	Rwy Ldg TDZE <b>1393</b> Apt Elev <b>1403</b>
--	------------------------	---

RNAV (GPS) RWY 33

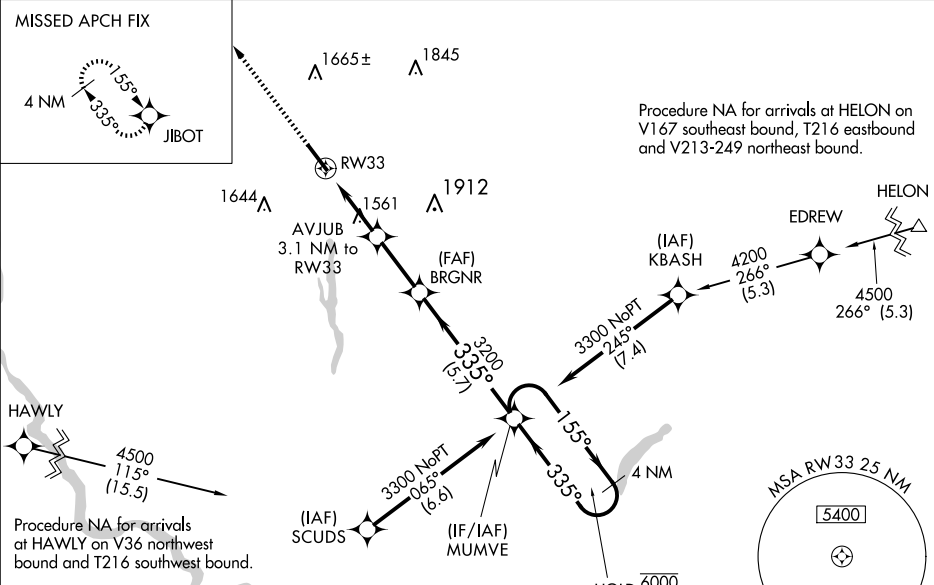
SULLIVAN COUNTY INTL (MSV)

RNP APCH - GPS.

For uncompensated Baro-VNAV systems, LNAV/VNAV NA below -17°C or above 54°C. Baro-VNAV and VDP NA when using New York Stewart Intl altimeter setting. When local altimeter setting not received, use New York Stewart Intl altimeter setting: increase LPV DA to 1848 feet and all visibilities ¾ SM; increase LNAV/VNAV DA to 1861 feet and all visibilities ¾ SM; increase all MDAs 220 feet and LNAV visibility Cat C and D ¾ SM, and Circling visibility Cat C ¾ SM and Cat D ½ SM.

MISSED APPROACH:  
Climb to 4000 direct JIBOT and hold.

AWOS-3PT <b>124.725</b>	NEW YORK APP CON <b>132.75 363.1</b>	CLNC DEL <b>121.6</b>	UNICOM <b>122.8 (CTAF) 0</b>
----------------------------	---	--------------------------	---------------------------------



ELEV 1403	<b>D</b>	TDZE 1393
-----------	----------	-----------

