

| | | |
|---|------------------------|---|
| LOC/DME I-MSV 109.1 Chan 28 | APP CRS 155° | Rwy Ldg TDZE 1403 Apt Elev 1403 |
|---|------------------------|---|

ILS or LOC RWY 15

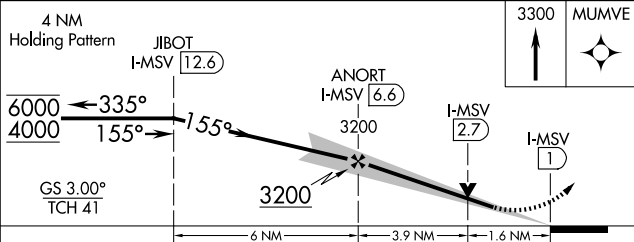
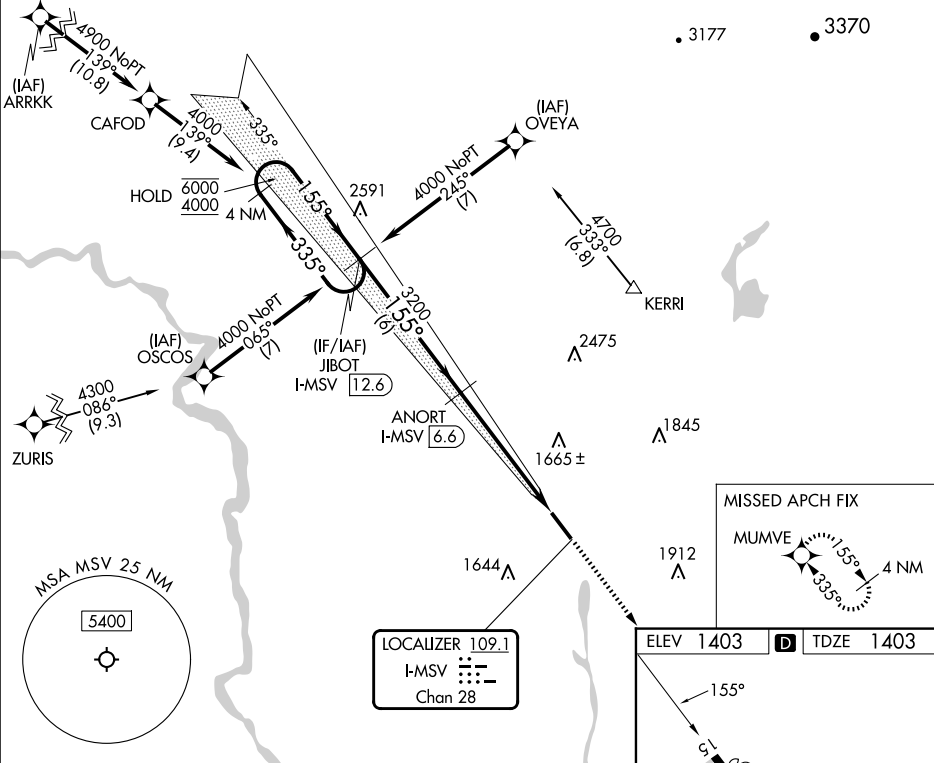
SULLIVAN COUNTY INTL (MSV)

RNP APCH - GPS.

▼ VDP NA when using New York Stewart Intl altimeter setting. When local altimeter setting not received, use New York Stewart Intl altimeter setting; increase S-ILS 15 DA to 1858 feet and all visibilities ½ SM; increase all MDAs 220 feet and S-LOC 15 visibility Cat B, C and D ¾ SM, and Circling Cat B, C and D visibilities ¾ SM.

MISSED APPROACH: Climb to 3300 direct MUMVE and hold.

| | | | |
|----------------------------|---|--------------------------|---------------------------------|
| AWOS-3PT 124.725 | NEW YORK APP CON 132.75 363.1 | CLNC DEL 121.6 | UNICOM 122.8 (CTAF) 0 |
|----------------------------|---|--------------------------|---------------------------------|



| CATEGORY | A | B | C | D |
|----------|--------|-------------|-------------|--------------|
| S-ILS 15 | | 1653-¾ | 250 (300-¾) | |
| S-LOC 15 | 1960-1 | 557 (600-1) | 1960-1¾ | 557 (600-1¾) |
| CIRCLING | 1960-1 | 557 (600-1) | 2020-1¾ | 2180-2½ |

