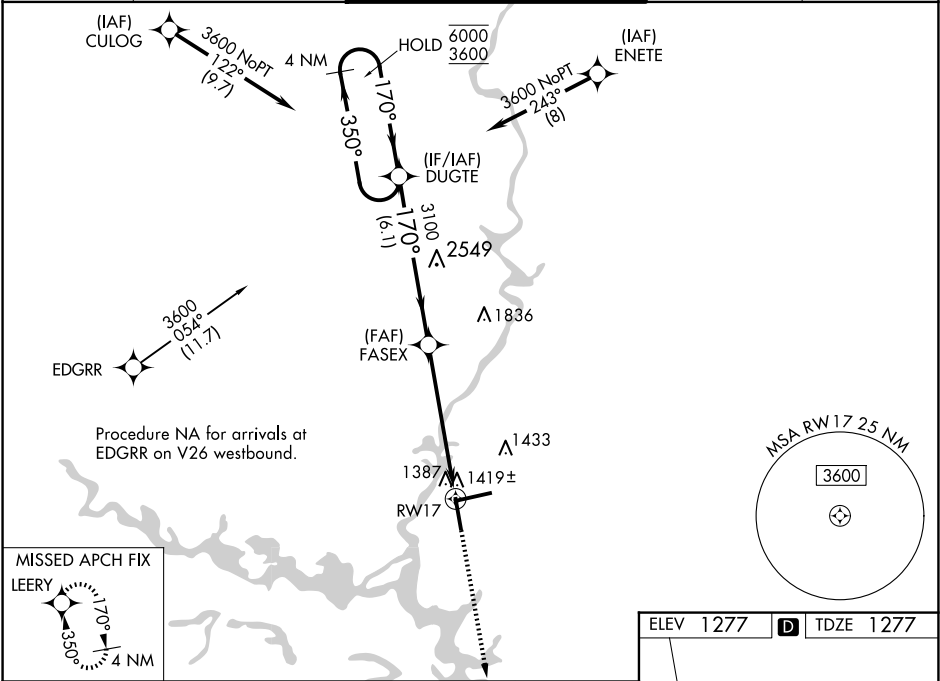


WAAS CH 53321 W17A	APP CRS 170°	Rwy Idg TDZE 1277 Apt Elev 1277
--	------------------------	---

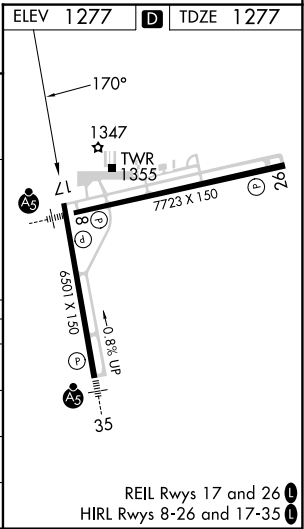
RNAV (GPS) RWY 17
CENTRAL WISCONSIN (CWA)

RNP APCH - GPS.		MISSED APPROACH: Climb to 2900 direct LEERY and hold.
	Rwy 17 helicopter visibility reduction below 3/4 SM NA. For uncompensated Baro-VNAV systems, LNAV/VNAV NA below -17°C or above 54°C.	

ATIS 127.45	MINNEAPOLIS CENTER 124.4 317.7	CWA TOWER★ 119.75 (CTAF) 0 360.7	GND CON 121.9 360.7	UNICOM 122.95
-----------------------	--	--	-------------------------------	-------------------------



4 NM Holding Pattern		VGSI and RNAV glidepath not coincident.		2900	LEERY
GP 3.00° TCH 45		3100		RW17	
		6.1 NM		4.5 NM	
				1.1 NM	
CATEGORY	A	B	C	D	
LPV DA	1534-1		257 (300-1)		
LNAV/ VNAV DA	1601-1½		324 (400-1½)		
LNAV MDA	1680-1	403 (500-1)	1680-1½	403 (500-1½)	
CIRCLING	1740-1	463 (500-1)	1740-1½ 463 (500-1½)	1840-2 563 (600-2)	



EC-3, 10 JUL 2025 to 07 AUG 2025

EC-3, 10 JUL 2025 to 07 AUG 2025