

WAAS CH 82729 W36A	APP CRS 357°	Rwy Idg TDZE 1182 Apt Elev 1182	5199 1182 1182
--	------------------------	---	---

RNAV (GPS) RWY 36

UNIVERSITY OF OKLAHOMA WESTHEIMER (OUN)

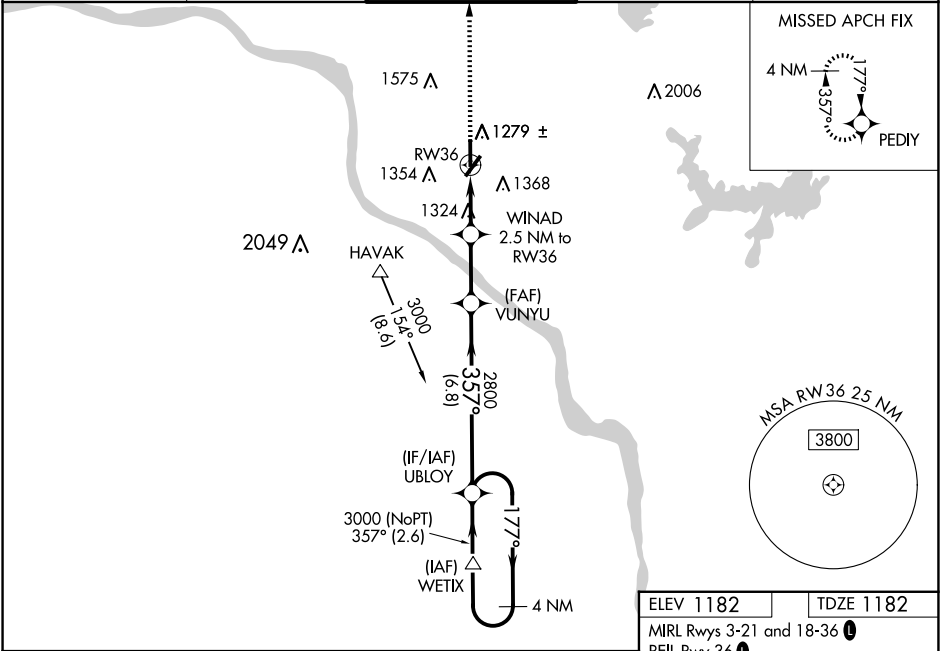
▼

⚠

For uncompensated Baro-VNAV systems, procedure NA below -17°C (2°F) or above 54°C (130°F). Baro-VNAV and VDP NA when using OKC Will Rogers Intl altimeter setting. DME/DME RNP-0.3 NA. When local altimeter setting not received, use OKC Will Rogers Intl altimeter setting and increase LPV DA to 1473 feet, LNAV/VNAV DA to 1541 feet; increase all MDA 60 feet, increase LPV visibility all Cats to 1 mile, LNAV/VNAV visibility all Cats to 1¼ mile, and increase Circling Cat C/D visibility ¼ mile. Circling NA southeast of Rwy 3 and 21.

MISSED APPROACH:
Climb to 4000 direct
PEDIY and hold.

AWOS-3PT 119.55	OKE CITY APP CON 120.45 288.325	WESTHEIMER TOWER ★ 118.0 (CTAF) 0	GND CON 121.6	UNICOM 122.95
---------------------------	---	---	-------------------------	-------------------------



4 NM Holding Pattern		UBLOY	4000	PEDIY
3000		←177°	→357°	→357°
GP 3.00°				
TCH 40				
		6.8 NM	2.5 NM	1.2 NM
		2800	WINAD 2.5 NM to RW36	*1.3 NM to RW36
		*2000		
CATEGORY	A	B	C	D
LPV DA	1432-7⁄8		250 (300-7⁄8)	
LNAV/VNAV DA	1500-1½		318 (400-1½)	
LNAV MDA	1640-1	458 (500-1)	1640-1¾	458 (500-1¾)
CIRCLING	1660-1	478 (500-1)	1940-2¼	1940-2½
			758 (800-2¼)	758 (800-2½)

