

APP CRS
137°

Rwy Idg **5009**
TDZE **494**
Apt Elev **494**

RNAV (GPS) RWY 14
KOSCIUSKO-ATTALA COUNTY (OSX)

RNP APCH - GPS.

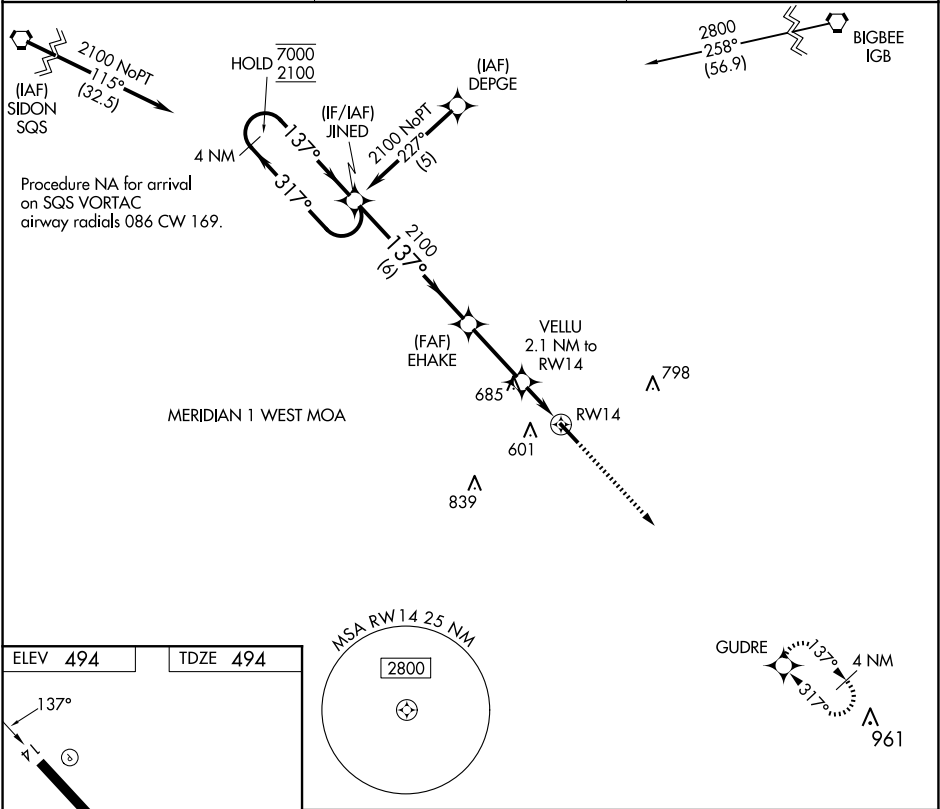
▼

NA

Rwy 14 helicopter visibility reduction below 1 SM NA. Procedure NA at night. Use Philadelphia altimeter setting; when not received, use Greenwood altimeter setting and increase all MDAs 80 feet, increase visibility LNAV Cat C ¼ SM and Circling Cat C ¾ SM.

MISSED APPROACH: Climb to 2200 direct GUDRE and hold.

| | | |
|-------------------------------|---------------------------------------|------------------------|
| MPE AWOS-3P 118.725 | MEMPHIS CENTER 132.75 263.0 | CTAF 122.9 0 |
|-------------------------------|---------------------------------------|------------------------|



ELEV **494** | TDZE **494**

MRL Rwy 14-32 0

4 NM Holding Pattern JINED

Visual Segment - Obstacles.

2200 GUDRE

| CATEGORY | A | B | C | D |
|----------|--------|-------------|-------------------------|----|
| LNAV MDA | 1020-1 | 526 (600-1) | 1020-1½ 526 (600-1½) | NA |
| CIRCLING | 1020-1 | 526 (600-1) | 1160-1¾ 666 (700-1¾) | NA |