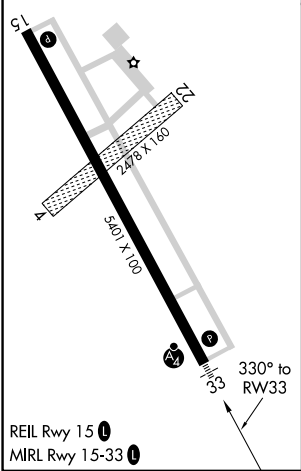
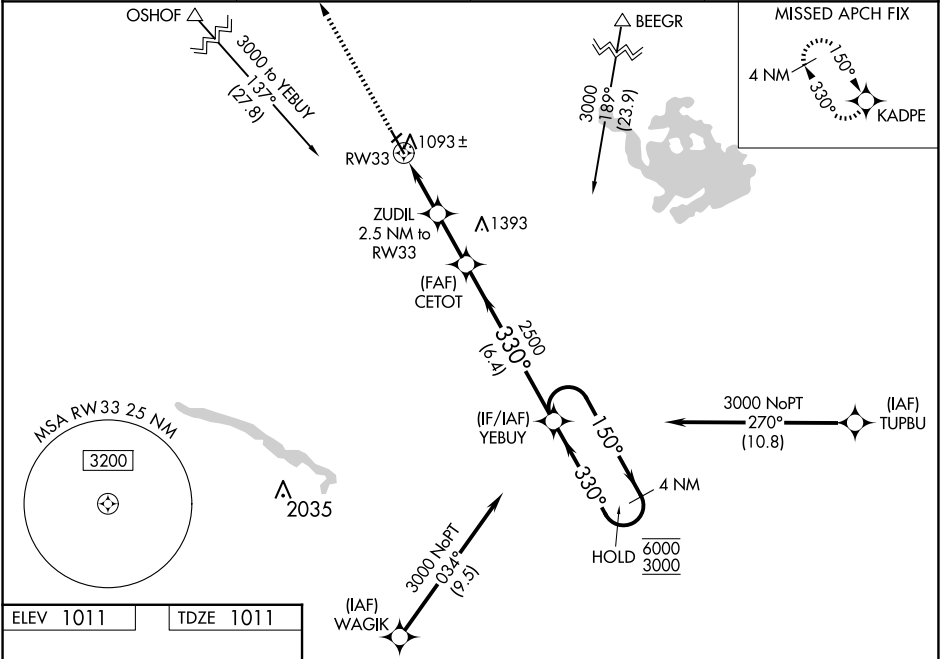


WAAS CH <b>56631</b> <b>W33A</b>	APP CRS <b>330°</b>	Rwy Idg <b>5401</b> TDZE <b>1011</b> Apt Elev <b>1011</b>
--	------------------------	---

RNAV (GPS) RWY 33  
NEW ULM MUNI (ULM)

RNP APCH. Circling NA to Rwy 4 and 22. For uncompensated Baro-VNAV systems, LNAV/VNAV NA below -17°C or above 54°C. Inop table does not apply to LPV all Cats. For inop ALS, increase LNAV/VNAV all Cats visibility to 7/5 SM, LNAV Cat D to 1 1/5 SM.	MALSF 	MISSED APPROACH: Climb to 3000 direct KADPE and hold.
---	-----------	---

AWOS-3 <b>118.325</b>	MINNEAPOLIS CENTER <b>127.1 290.2</b>	GCO <b>121.725</b>	UNICOM <b>123.0 (CTAF) 0</b>
--------------------------	--	-----------------------	---------------------------------



3000	KADPE	VGSi and RNAV glidepath not coincident (VGSi Angle 3.00/TCH 50).			
*LNAV only.		ZUDIL 2.5 NM to RW33	CETOT 2500	YEBUY	4 NM Holding Pattern
		*1.1 NM to RW33			
		1840*			
		1.1	1.4	2.1 NM	6.4 NM
CATEGORY	A	B	C	D	
LPV DA	1211-3/4 200 (200-3/4)				
LNAV/VNAV DA	1312-3/4 301 (400-3/4)				
LNAV MDA	1400-3/4 389 (400-3/4)		1400-7/8 389 (400-7/8)		
CIRCLING	1440-1 429 (500-1)	1500-1 489 (500-1)	1620-1 3/4 609 (700-1 3/4)	1620-2 609 (700-2)	

NC-1, 10 JUL 2025 to 07 AUG 2025

NC-1, 10 JUL 2025 to 07 AUG 2025