

WAAS CH 87131 W15A	APP CRS 150°	Rwy Idg 5401 TDZE 1011 Apt Elev 1011
--	------------------------	---

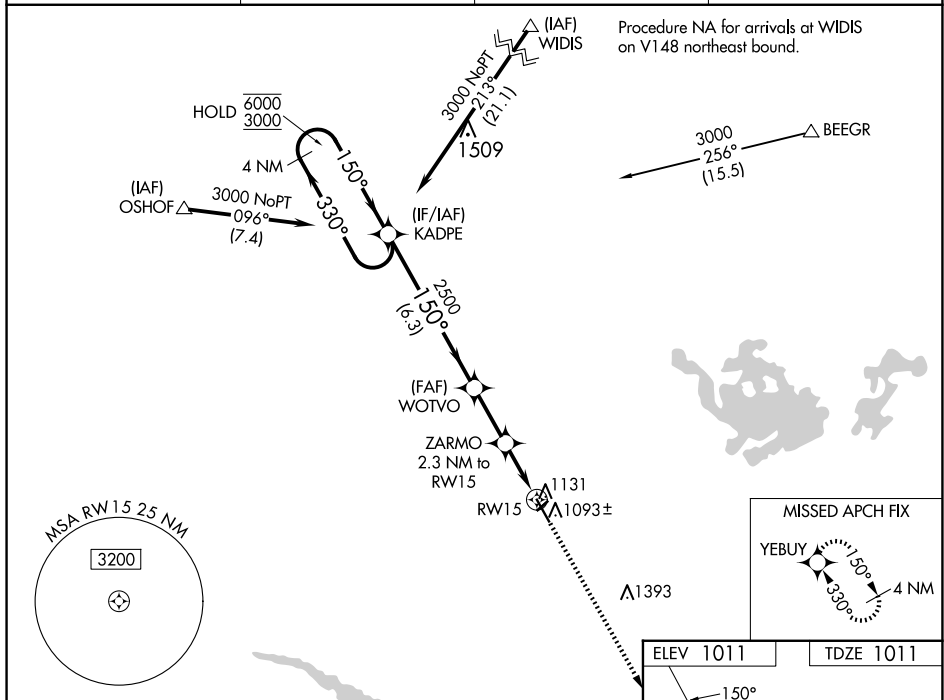
RNAV (GPS) RWY 15
NEW ULM MUNI (ULM)

RNP APCH.

T Circling NA to Rwy 4 and 22. For uncompensated Baro-VNAV systems, LNAV/VNAV NA below -17°C or above 54°C.

MISSED APPROACH: Climb to 3000 direct YEBUY and hold.

AWOS-3 118.325	MINNEAPOLIS CENTER 127.1 290.2	GCO 121.725	UNICOM 123.0 (CTAF) 0
--------------------------	--	-----------------------	---------------------------------



VGSI and RNAV glidepath not coincident (VGSI Angle 3.00/TCH 25).

4 NM Holding Pattern

KADPE

WOTVO

ZARMO 2.3 NM to RW15

6000 ← 330°

3000 ← 150°

GP 3.00° TCH 40

2500

1760

6.3 NM

2.3 NM

1.1 NM

1.2 NM

1.2 NM to RW15

1.2 NM to RW15

3000

YEBUY

CATEGORY	A	B	C	D
LPV DA	1261-1 250 (300-1)			
LNAV/VNAV DA	1298-1 287 (300-1)			
LNAV MDA	1400-1 389 (400-1)		1400-1½ 389 (400-1½)	
C CIRCLING	1440-1 429 (500-1)	1500-1 489 (500-1)	1620-1¾ 609 (700-1¾)	1620-2 609 (700-2)