

WAAS CH <b>50404</b> <b>W18A</b>	APP CRS <b>176°</b>	Rwy Idg TDZE Apt Elev	<b>4403</b> <b>914</b> <b>918</b>
--	------------------------	-----------------------------	---

RNAV (GPS) RWY 18

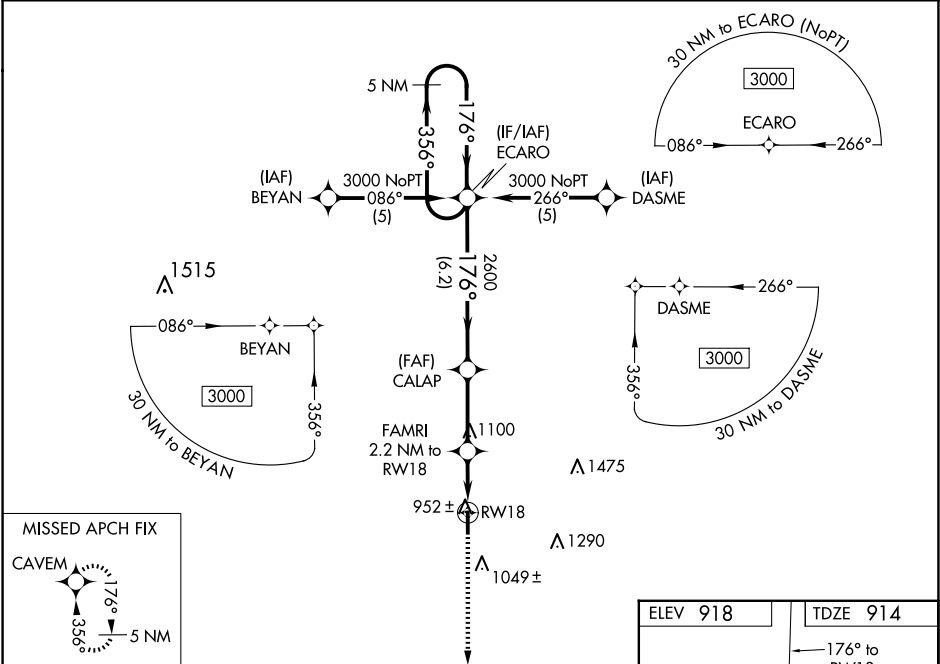
FORT SCOTT MUNI (F'SK)

NA

When local altimeter setting not received, use Chanute altimeter setting and increase all DAs 93 feet and all MDAs 100 feet; increase Circling Cat C/D visibility ½ SM. Baro-VNAV NA when using Chanute altimeter setting. For uncompensated Baro-VNAV systems, LNAV/VNAV NA below -16°C (4°F) or above 47°C (116°F). DME/DME RNP-0.3 NA. Visibility reduction by helicopters NA.

MISSED APPROACH: Climb to 3100 direct CAVEM and hold.

AWOS-3P <b>124.425</b>	KANSAS CITY CENTER <b>125.55 327.0</b>	UNICOM <b>122.8 (CTAF) 1</b>
---------------------------	---	---------------------------------



<div>5 NM Holding Pattern</div> <div>3000 ← 356° → 176° → 176° → 2600</div> <div>GP 3.00° TCH 39</div> <div>ECARO</div> <div>CALAP</div> <div>FAMRI 2.2 NM to RW18</div> <div>RW18</div> <div>*1640</div> <div>3100 CAVEM</div> <div>*LNAV only</div> <div>6.2 NM 2.9 NM 2.2 NM</div>				
CATEGORY	A	B	C	D
LPV DA		1164-1	250 (300-1)	
LNAV/ VNAV DA		1212-1	298 (300-1)	
LNAV MDA		1220-1	306 (400-1)	
CIRCLING	1280-1 362 (400-1)	1380-1 462 (500-1)	1640-2 722 (800-2)	1640-2¼ 722 (800-2¼)

