

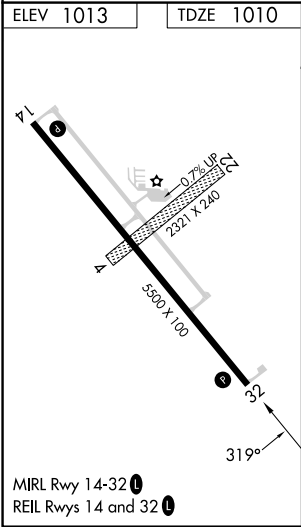
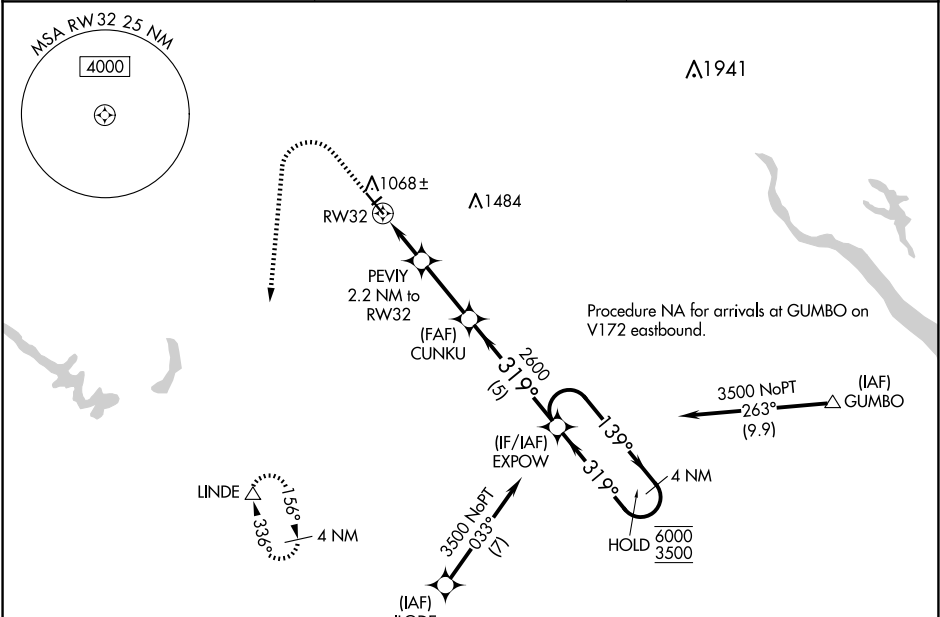
WAAS CH 53345 W32A	APP CRS 319°	Rwy Idg TDZE Apt Elev	5500 1010 1013
--	------------------------	-----------------------------	---




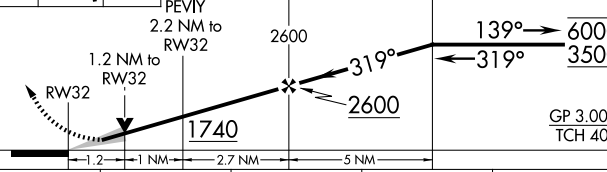

RNAV (GPS) RWY 32

PERRY MUNI (PRO)

RNP APCH - GPS.	MISSED APPROACH: Climb to 1500 then climbing left turn to 3500 direct LINDE and hold.
<div><div></div><div></div></div> <div>Circling NA to Rws 4 and 22. For uncompensated Baro-VNAV systems, LNAV/VNAV NA below -17°C or above 54°C.</div>	

AWOS-3 118.0	DES MOINES APP CON 123.9 360.7	UNICOM 122.8 (CTAF) 0
------------------------	--	---------------------------------



1500	3500	LINDE	VGSI and RNAV glidepath not coincident (VGSI Angle 3.00/TCH 33).			
						
CATEGORY		A	B	C	D	
LPV	DA	1260- ³ / ₄ 250 (300- ³ / ₄)				
LNAV/ VNAV	DA	1310- ⁷ / ₈ 300 (300- ⁷ / ₈)				
LNAV	MDA	1380-1 370 (400-1)				
 CIRCLING		1440-1 427 (500-1)	1480-1 467 (500-1)	1600-1 ¹ / ₂ 587 (600-1 ¹ / ₂)	1840-2 ³ / ₄ 827 (900-2 ³ / ₄)	

NC-3, 10 JUL 2025 to 07 AUG 2025

NC-3, 10 JUL 2025 to 07 AUG 2025