

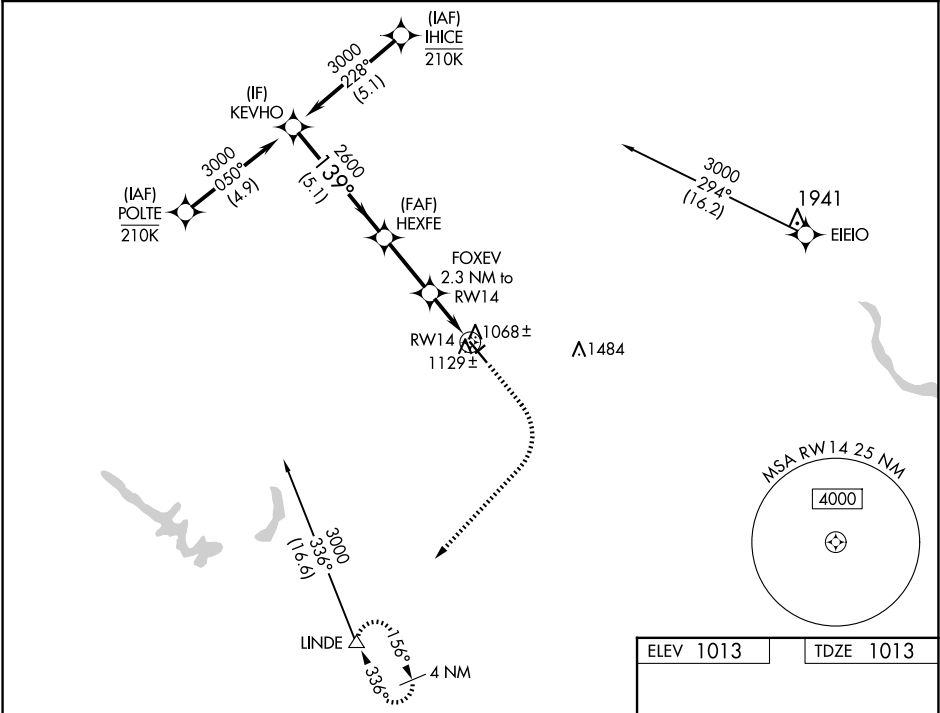
WAAS CH <b>99345</b> <b>W14A</b>	APP CRS <b>139°</b>	Rwy Idg TDZE Apt Elev <b>5500</b> <b>1013</b> <b>1013</b>
--	------------------------	--

RNAV (GPS) RWY 14

PERRY MUNI (PRO)

RNP APCH - GPS.	MISSED APPROACH: Climb to 1500 then climbing right turn to 3500 direct LINDE and hold.
<div><div></div><div>Circling NA to Rwy 4 and 22. For uncompensated Baro-VNAV systems, LNAV/VNAV NA below -17°C or above 54°C.</div></div>	

AWOS-3 <b>118.0</b>	DES MOINES APP CON <b>123.9 360.7</b>	UNICOM <b>122.8 (CTAF) 0</b>
------------------------	--	---------------------------------



VGSI and RNAV glidepath not coincident (VGSI Angle 3.00/TCH 34).					1500	3500	LINDE
CATEGORY	A	B	C	D			
LPV DA	1263-3/4 250 (300-3/4)						
LNAV/VNAV DA	1310-7/8 297 (300-7/8)						
LNAV MDA	1380-1 367 (400-1)						
CIRCLING	1440-1 427 (500-1)	1480-1 467 (500-1)	1600-1 1/2 587 (600-1 1/2)	1840-2 3/4 827 (900-2 3/4)	MIRL Rwy 14-32 0 REIL Rwy 14 and 32 0		

NC-3, 10 JUL 2025 to 07 AUG 2025

NC-3, 10 JUL 2025 to 07 AUG 2025