

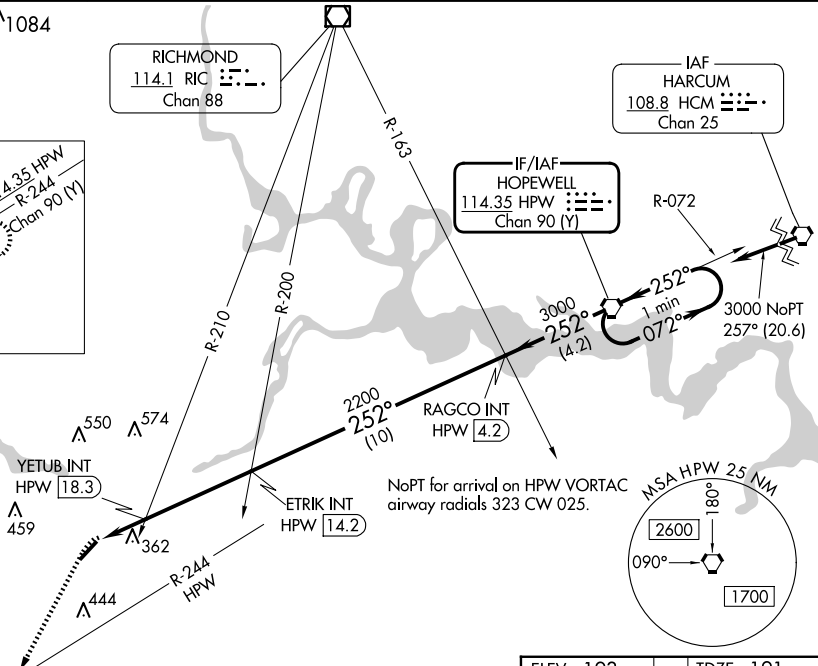
VOR RWY 23  
TRI CITIES EXEC/DINWIDDIE COUNTY (PTB)

**MISSED APPROACH:** Climb to 2000 on heading 214° and HPW R-244 to FASOS/HPW 30.8 DME and hold.

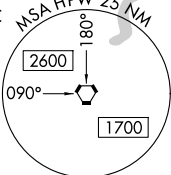
 $\Lambda_{1084}$ 

IAF  
HARCUM  
108.8 HCM  $\equiv \equiv \equiv$   
Chan 25

IF/IAF  
HOPEWELL  
114.35 HPW ::::  
Chan 90 (Y)



NoPT for arrival on HPW VORTAC  
airway radials 323 CW 025.



2000  
↑  
hdg 214°

HPW R-244

FASOS HPW 30.8

\*780 when using Richmond Executive-Chesterfield County altimeter setting.

HPW VORTAC

One Minute Holding Pattern

YETUB INT HPW 18.3

ETRIK INT HPW 14.2

RAGCO INT HPW 4.2

HPW 20.2

3.06° TCH 40

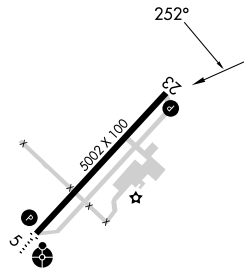
252°

072°

3000

2200

\*740



CATEGORY	A	B	C	D
S-23	740-1 549 (600-1)		740-1 $\frac{5}{8}$ 549 (600-1 $\frac{5}{8}$ )	NA
<b>C</b> CIRCLING	740-1 547 (600-1)		760-1 $\frac{5}{8}$ 567 (600-1 $\frac{5}{8}$ )	NA
YETUB FIX MINIMUMS (DUAL VOR RECEIVERS OR DME REQUIRED)				
S-23	620-1 429 (500-1)		620-1 $\frac{1}{4}$ 429 (500-1 $\frac{1}{4}$ )	NA
<b>C</b> CIRCLING	680-1 487 (500-1)		760-1 $\frac{1}{2}$ 567 (600-1 $\frac{1}{2}$ )	NA

MIRL Rwy 5-23 <b>L</b>					
REIL Rwy 23 <b>L</b>					
FAF to MAP 6.1 NM					
Knots	60	90	120	150	180
Min:Sec	6:06	4:04	3:03	2:26	2:02