

WAAS CH 86706 W23A	APP CRS 231°	Rwy Idg 5002 TDZE 191 Apt Elev 193
--	------------------------	---

RNAV (GPS) RWY 23
TRI CITIES EXEC/DINWIDDIE COUNTY (PTB)

RNP APCH - GPS.

TA

For uncompensated Baro-VNAV systems, LNAV/VNAV NA below -15°C or above 54°C.

MISSED APPROACH: Climb to 2000 direct FASOS and hold.

AWOS-3 133.325	POTOMAC APP CON 126.75 307.2	GCO 135.075	UNICOM 122.7 (CTAF) 0
--------------------------	--	-----------------------	---------------------------------

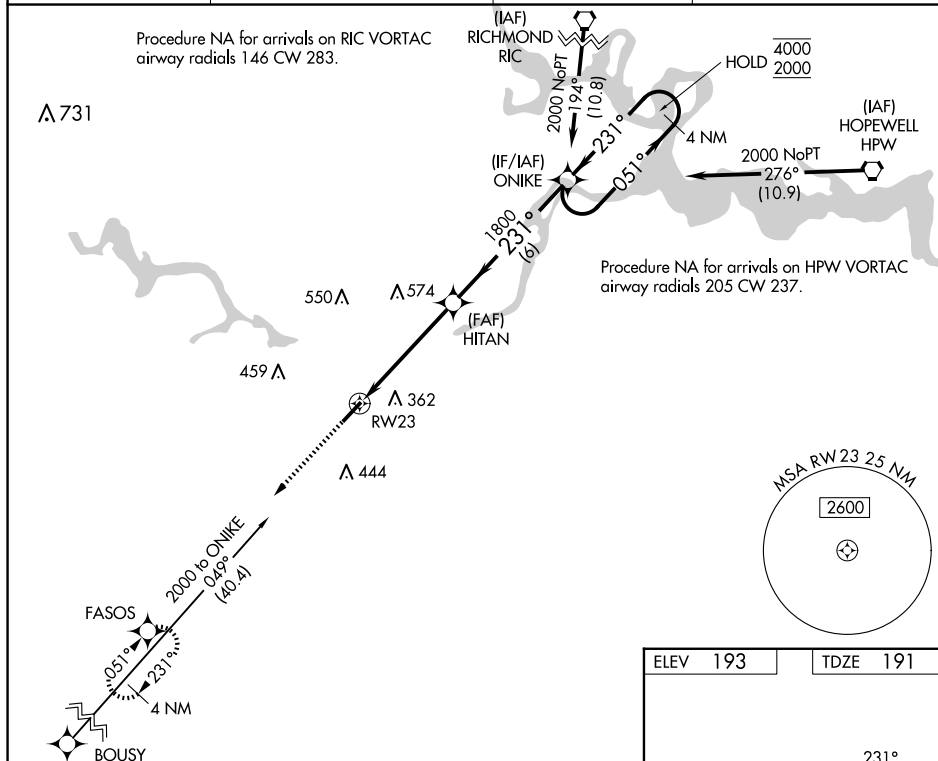


Diagram illustrating a flight path for a 4 NM Holding Pattern. The path starts at RW23, proceeds 1.2 NM to HITAN, then 3.8 NM to ONIKE, and finally 6 NM to the holding pattern. The holding pattern is a 4 NM circle with a 051° heading and a 231° turn. The diagram also shows the 2000 and 20000 altitudes and the GP 3.00 TCH 40.

