

WAAS CH 40336 W04A	APP CRS 043°	Rwy Idg TDZE 92 Apt Elev 92	4505
----------------------------------------	------------------------	-------------------------------------------------	-------------

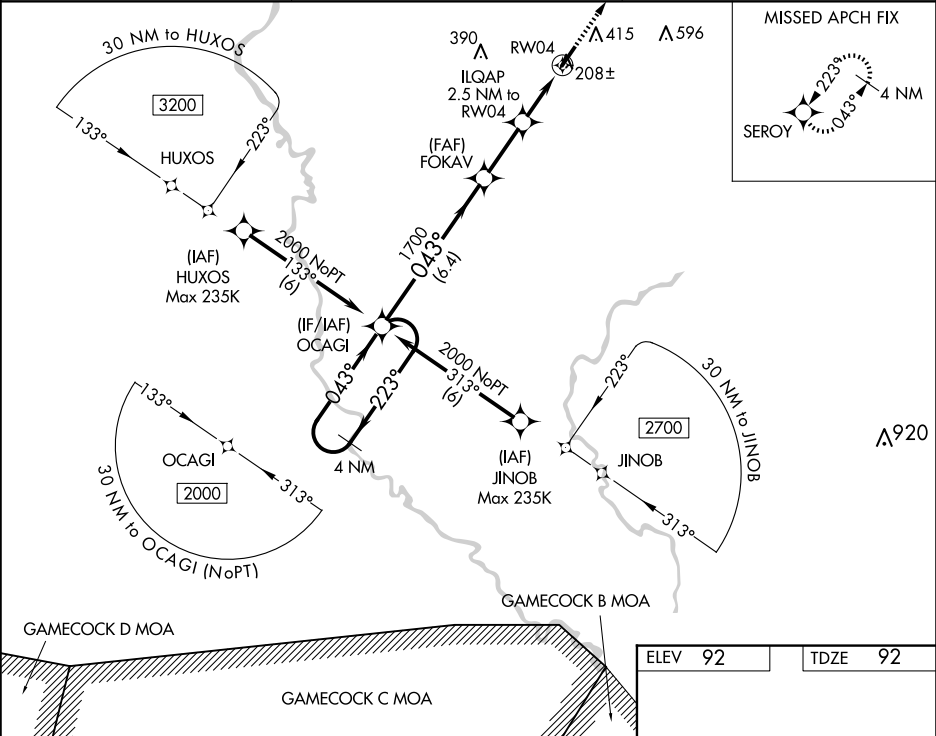
RNAV (GPS) RWY 4

MARION COUNTY (MAO)

Baro-VNAV NA when using Florence altimeter setting. For uncompensated Baro-VNAV systems, LNAV/VNAV NA below -8°C (18°F) or above 54°C (130°F). DME/DME RNP-0.3 NA. Helicopter visibility reduction below ¾ SM NA. When local glimeter setting not received, use Florence glimeter setting and increase all DA 53 feet and all visibilities ¼ mile, increase all MDA 60 feet and all Cat C/D visibilities ¼ mile.

MISSED APPROACH:
Climb to 2000 direct
SEROY and hold.

AWOS-3PT 119.875	FLORENCE APP CON ★ 135.25 316.15	UNICOM 122.8 (CTAF)
----------------------------	--------------------------------------------	-------------------------------



4 NM Holding Pattern		OCAGI		FOKAV		ILQAP		RW04	
2000		223°		043°		1700		2.5 NM to RW04	
GP 3.00°		TCH 39		1700		*920		RW04	
CATEGORY		A		B		C		D	
LPV DA		342-7/8		250 (300-7/8)		342-1		250 (300-1)	
LNAV/VNAV DA		369-7/8		277 (300-7/8)		369-1		277 (300-1)	
LNAV MDA		460-1		368 (400-1)					
CIRCLING		720-1		628 (700-1)		720-1 3/4 628 (700-1 3/4)		960-2 3/4 868 (900-2 3/4)	

