

WAAS CH <b>45836</b> <b>W22A</b>	APP CRS <b>223°</b>	Rwy Idg TDZE Apt Elev	<b>4505</b> <b>90</b> <b>92</b>
--	------------------------	-----------------------------	---------------------------------------

RNAV (GPS) RWY 22

MARION COUNTY (MAO)

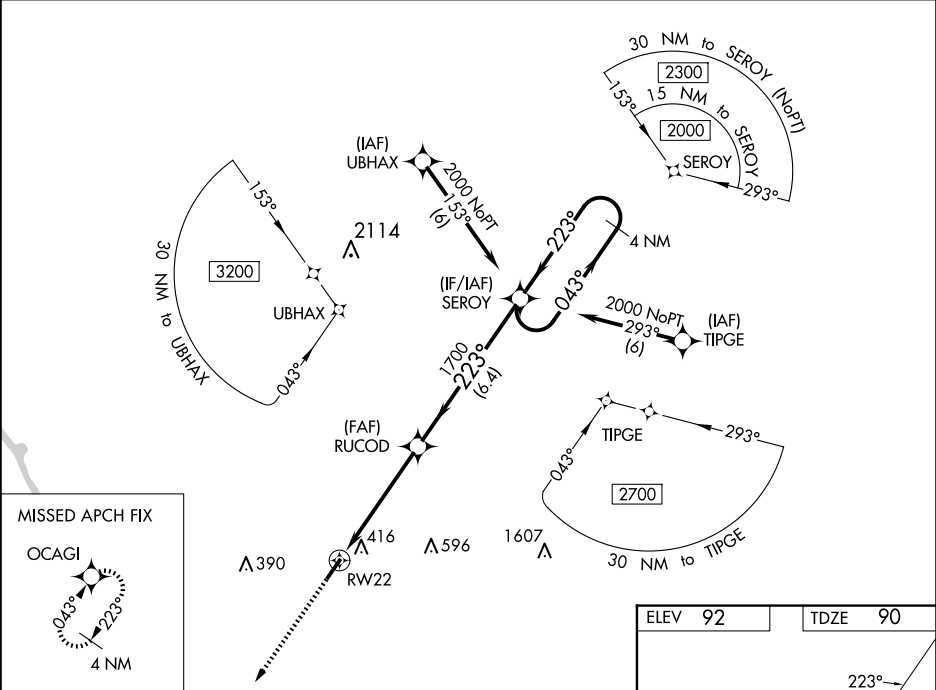
⚠





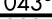

Baro-VNAV NA when using Florence altimeter setting. For uncompensated Baro-VNAV systems, LNAV/VNAV NA below -8°C (18°F) or above 54°C (130°F). DME/DME RNP-0.3 NA. Helicopter visibility reduction below ¾ SM NA. When local altimeter setting not received, use Florence altimeter setting and increase all DA 53 feet and all visibilities ¼ mile, increase all MDA 60 feet and all Cat C/D visibilities ¼ mile.

MISSED APPROACH:

Climb to 2000 direct OCAGI and hold.

AWOS-3PT <b>119.875</b>	FLORENCE APP CON ★ <b>135.25 316.15</b>	UNICOM <b>122.8</b> (CTAF)
----------------------------	--	-------------------------------



2000	OCAGI				
					
		RUCOD	SEROY	4 NM Holding Pattern	
		1700			
					
		1700		2000	
		GP 3.00°		TCH 39	
		4.9 NM		6.4 NM	
CATEGORY		A	B	C	D
LPV DA		396-1		306 (400-1)	
LNAV/VNAV DA		577-1½		487 (500-1½)	
LNAV MDA		680-1	590 (600-1)	680-1¾	590 (600-1¾)
 CIRCLING		720-1	628 (700-1)	720-1¾ 628 (700-1¾)	960-2¾ 868 (900-2¾)

