

VORTAC LTS	Rwy Idg	N/A
<b>109.8</b>	TDZE	N/A
Chan <b>35</b>	Apt Elev	<b>1433</b>

APP CRS  
**122°**

VOR-A

ALTUS/QUARTZ MOUNTAIN RGNL (A.X.S)

⚠

When local altimeter setting not received, use Hobart Rgnl altimeter setting and increase all MDA 80 feet. Increase Circling Cat C visibility ¼ mile.

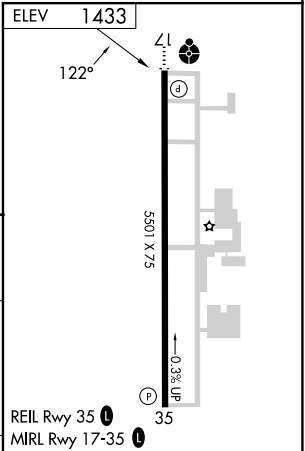
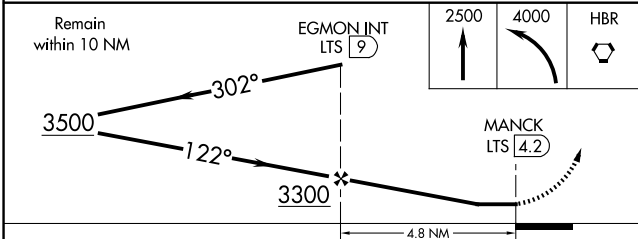
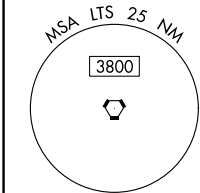
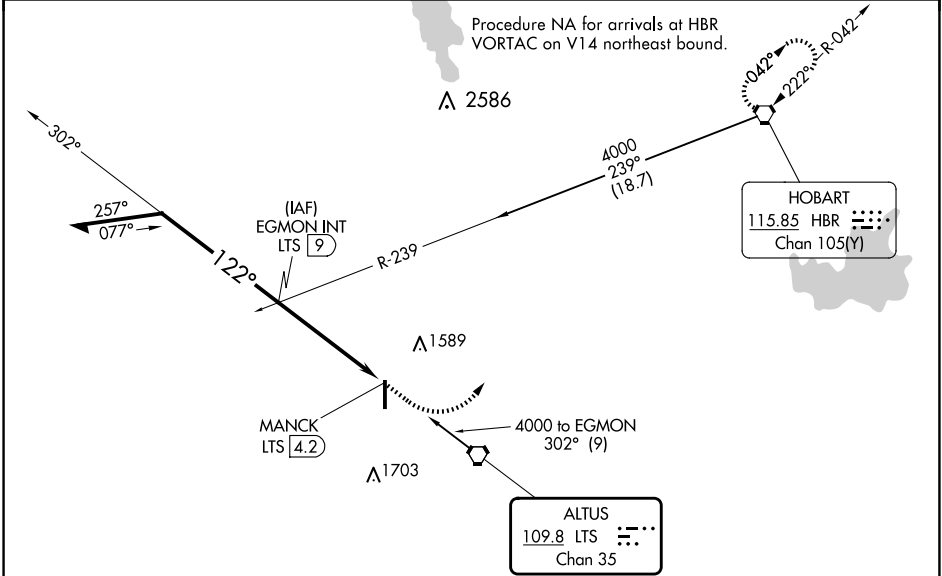
⚠


MISSED APPROACH: Climb to 2500 then climbing left turn to 4000 direct HBR VORTAC and hold.

AWOS-3PT  
**118.825**

ALTUS APP CON★  
**125.1 353.7**

UNICOM  
**122.8 (CTAF) 0**



CATEGORY	A	B	C	D	FAF to MAP 4.8 NM					
 CIRCLING	1920-1	487 (500-1)	2020-1½ 587 (600-1½)	NA	Knots	60	90	120	150	180
					Min:Sec	4:48	3:12	2:24	1:55	1:36