

WAAS CH 86216 W17A	APP CRS 175°	Rwy Idg 5501 TDZE 1433 Apt Elev 1433
--	------------------------	---

RNAV (GPS) RWY 17
ALTUS/QUARTZ MOUNTAIN RGNL (AXS)

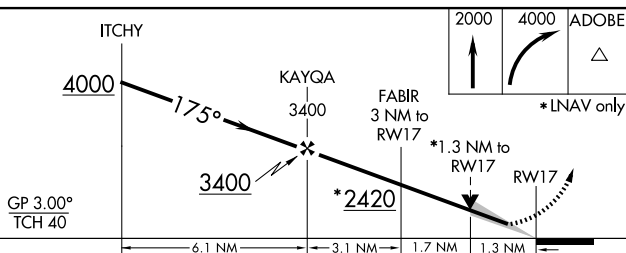
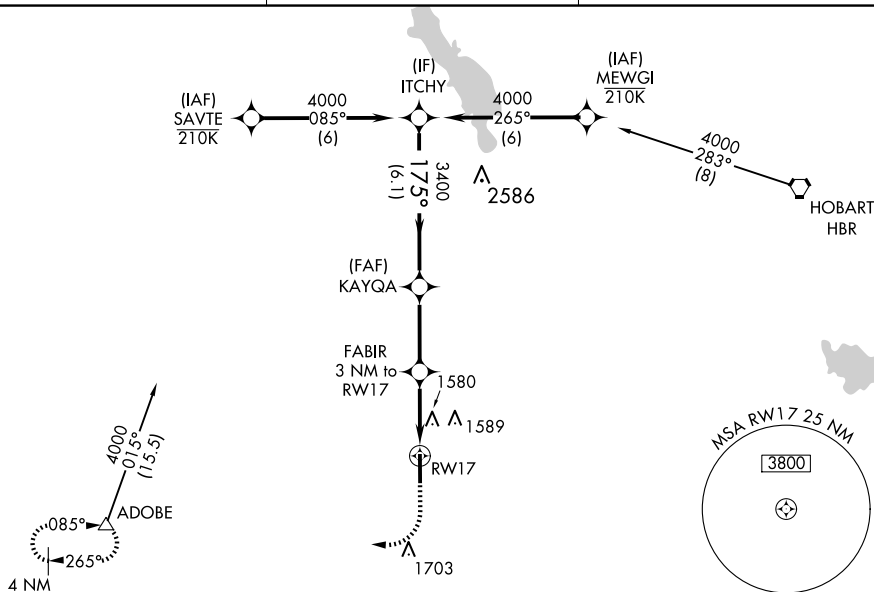
V For uncompensated Baro-VNAV systems, LNAV/VNAV NA below -17°C (2°F) or above 54°C (130°F). Baro-VNAV and VDP NA when using Hobart Rgnl altimeter setting. DME/DME RNP-0.3 NA. When local altimeter setting not received, use Hobart Rgnl altimeter setting and increase LPV DA to 1754 feet and LNAV/VNAV DA to 1997 feet and increase all MDA 80 feet. Increase LPV, LNAV/VNAV all Cats and Circling Cat C visibility $\frac{1}{4}$ mile, increase LNAV Cat C visibility $\frac{1}{8}$ mile.


ODALS



MISSED APPROACH: Climb to 2000 then climbing right turn to 4000 direct ADOBE and hold.

AWOS-3PT 118.825	ALTUS APP CON★ 125.1 353.7	UNICOM 122.8 (CTAF) 0
----------------------------	--------------------------------------	--



CATEGORY	A	B	C	D
LPV DA	1683- $\frac{7}{8}$	250 (300- $\frac{7}{8}$)		NA
LNAV/ VNAV DA	1926-1 $\frac{3}{4}$	493 (500-1 $\frac{3}{4}$)		NA
LNAV MDA	1880-1	447 (500-1)	1880-1 $\frac{3}{8}$ 447 (500-1 $\frac{3}{8}$)	NA
 CIRCLING	1920-1	487 (500-1)	2020-1 $\frac{1}{2}$ 587 (600-1 $\frac{1}{2}$)	NA

