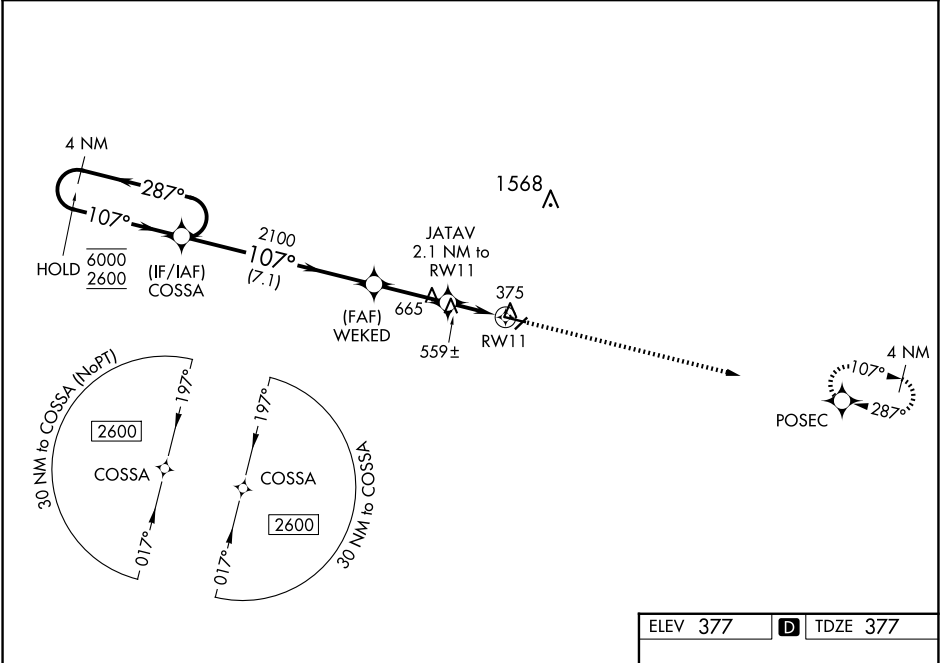


WAAS CH <b>82521</b> <b>W11A</b>	APP CRS <b>107°</b>	Rwy Idg TDZE <b>377</b> Apt Elev <b>377</b>
--	------------------------	---

RNAV (GPS) RWY 11

COCHRAN (48A)

RNP APCH - GPS.		MISSED APPROACH: Climb to 2600 direct POSEC and hold.
<div><div><div></div><div></div></div><div>Rwy 11 helicopter visibility reduction below 1 SM NA. For uncompensated Baro-VNAV systems, LNAV/VNAV NA below -15°C or above 54°C. Straight-in Rwy 11 NA at night, Circling Rwy 5, 11 and 23 NA at night.</div></div>		
AWOS-3PT 120.975	ATLANTA APP CON ★ 124.2 279.6	UNICOM 122.8 (CTAF) 0



4 NM Holding Pattern		VGSI and RNAV glidepath not coincident (VGSI Angle 3.25/TCH 45).		2600 ↑	POSEC ✧
6000 ← 287° 2600 → 107°		WEKED 2100		RW11	
GP 3.25° TCH 54		JATAV 2.1 NM to RW11		1160	
7.1 NM		2.7 NM		2.1 NM	
CATEGORY	A	B	C	D	
LPV DA	678-1 301 (400-1)				
LNAV/VNAV DA	690-1 313 (400-1)				
LNAV MDA	820-1 443 (500-1)		820-1 443 (500-1 3/4)		
CIRCLING	820-1 443 (500-1)	860-1 483 (500-1)	980-1 603 (700-1 3/4)	980-2 603 (700-2)	

MIRL Rwy 11-29

SE-4, 10 JUL 2025 to 07 AUG 2025

SE-4, 10 JUL 2025 to 07 AUG 2025