

WAAS CH 93720 W22A	APP CRS 218°	Rwy Idg 6032 TDZE 529 Apt Elev 529
--	------------------------	---

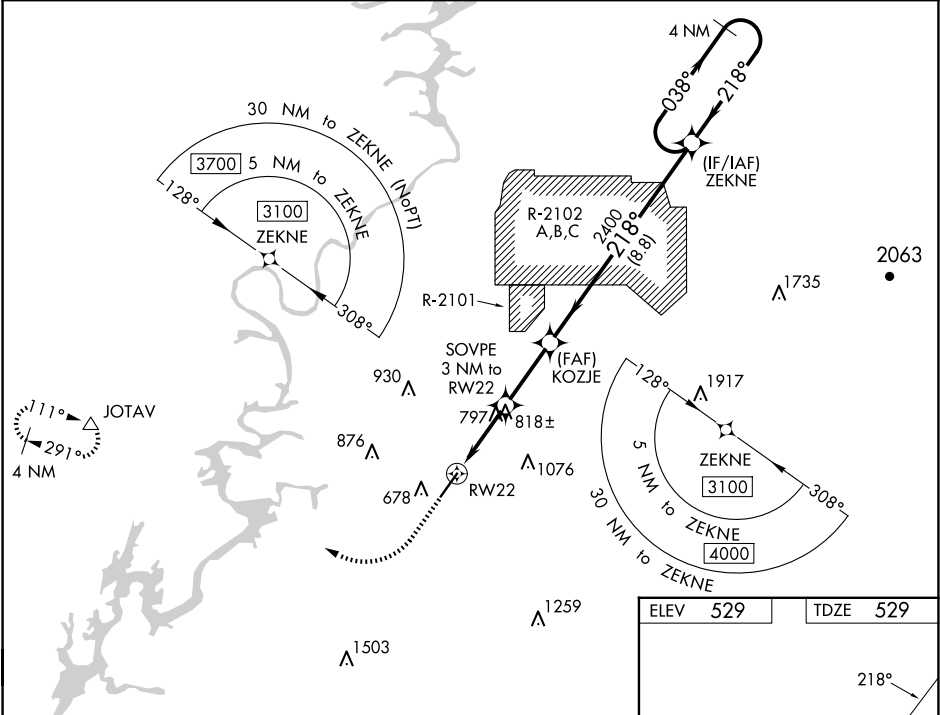
RNAV (GPS) RWY 22
TALLADEGA MUNI (ASN)

▼
▲ NA

Baro-VNAV NA when using Anniston altimeter setting. For uncompensated Baro-VNAV systems, LNAV/VNAV NA below -16°C (4°F) or above 54°C (130°F). DME/DME RNP-0.3 NA. VDP NA with Anniston altimeter setting. When local altimeter setting not received, use Anniston altimeter setting and increase LPV DA to 856, LNAV/VNAV DA to 1075, and all MDA 40 feet; increase LPV and LNAV/VNAV all Cats visibility and LNAV Cats C/D visibility 1/8 mile. Increase Circling Cat C visibility 1/4 SM. Rwy 22 Helicopter visibility reduction below 3/4 SM NA.

MISSED APPROACH: Climb to 1200 then climbing right turn to 3700 direct JOTAV and hold, continue climb in hold to 3700.

AWOS-3PT 118.425	BIRMINGHAM APP CON 132.15 285.45	UNICOM 122.8 (CTAF) 0
----------------------------	--	---------------------------------



1200 ↑		3700 ↗		JOTAV △		4 NM Holding Pattern					
*LNAV only.						SOVPE 3 NM to RW22		KOZJE 2400		ZEKNE	
RW22						*1.6 NM to RW22		*1520		038° → ← 218° 3100	
GP 3.00° TCH 45								2400			
1.6 NM						1.4 NM		2.7 NM		8.8 NM	
CATEGORY		A		B		C		D			
LPV DA				821-1		292 (300-1)					
LNAV/ VNAV DA				1040-1¾		511 (600-1¾)					
LNAV MDA		1080-1		551 (600-1)		1080-1⅝		551 (600-1⅝)			
CIRCLING		1140-1 611 (700-1)		1180-1 651 (700-1)		1380-2½ 851 (900-2½)		1500-3 971 (1000-3)			

