

LOC/DME I-ASN 109.95 Chan 36(Y)	APP CRS 038°	Rwy Idg 6032 TDZE 511 Apt Elev 529
---	------------------------	---

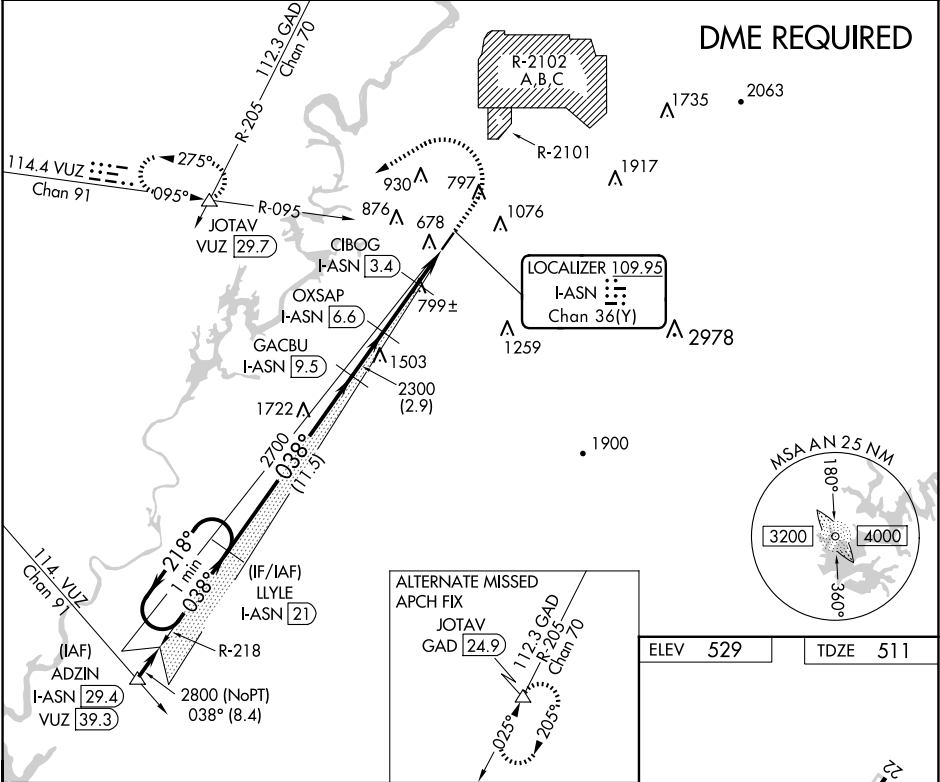
ILS Z or LOC Z RWY 4
TALLADEGA MUNI (ASN)

NA

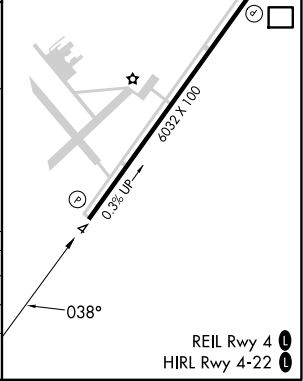
DME required. VDP NA with Anniston altimeter setting. When local altimeter setting not received, use Anniston altimeter setting and increase DA to 744 feet and all MDA 40 feet; increase S-LOC 4 Cat C/D ½ mile and Circling Cat C ¼ mile.

MISSED APPROACH: Climb to 1300 then climbing left turn to 3700 on heading 242° and on VUZ VORTAC R-095 to JOTAV INT/VUZ 30 DME and hold.

AWOS-3PT 118.425	BIRMINGHAM APP CON 132.15 285.45	UNICOM 122.8 (CTAF) 0
----------------------------	--	---------------------------------



VGSI and ILS glidepath not coincident (VGSI Angle 3.00/TCH 65).				
One Minute Holding Pattern				
LLYLE I-ASN [21] GACBU I-ASN [9.5] OXSAP I-ASN [6.6] CIBOG I-ASN [3.4]				
2800 ← 218° 038° → 2700 2300 *1280				
GS 3.00° TCH 45				
11.5 NM 2.9 3.2 NM 0.8 1.5 NM				
CATEGORY	A	B	C	D
S-ILS 4	711-¾ 200 (200-¾)			
S-LOC 4	1060-1	549 (600-1)	1060-1½	549 (600-1½)
CIRCLING	1140-1 611 (700-1)	1180-1 651 (700-1)	1380-2½ 851 (900-2½)	1500-3 971 (1000-3)



SE-4, 10 JUL 2025 to 07 AUG 2025

SE-4, 10 JUL 2025 to 07 AUG 2025